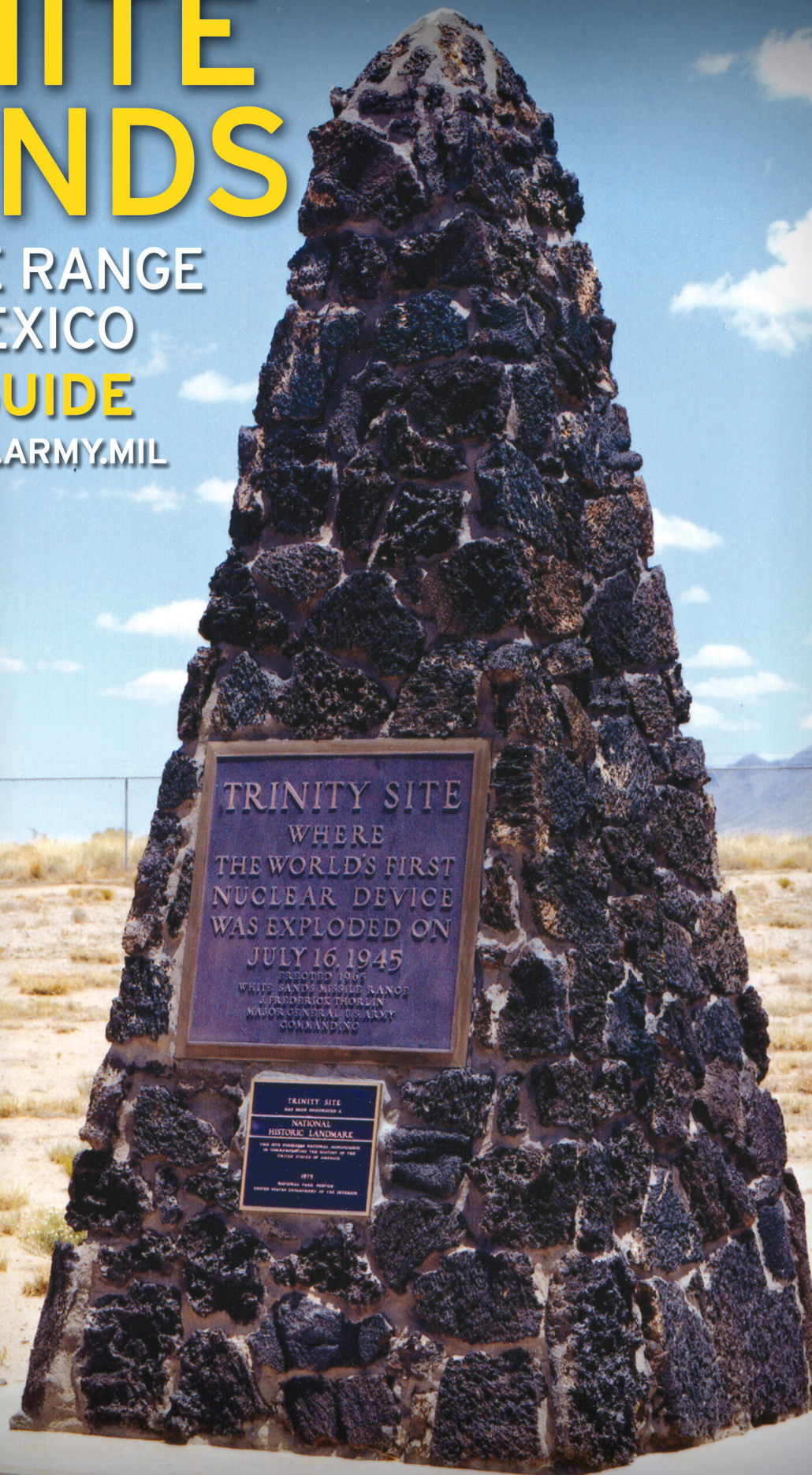


WHITE SANDS

MISSILE RANGE
NEW MEXICO

POST GUIDE

WWW.WSMR.ARMY.MIL



TRINITY SITE
WHERE
THE WORLD'S FIRST
NUCLEAR DEVICE
WAS EXPLODED ON
JULY 16, 1945
ERECTED 1945
WHITE SANDS MISSILE RANGE
J. FREDERICK THORLIN
MAJOR GENERAL, U.S. ARMY
COMMANDING

TRINITY SITE
NATIONAL
HISTORIC LANDMARK
1975
NATIONAL PARK SERVICE
UNITED STATES DEPARTMENT OF THE INTERIOR

Missiles and Rockets

**Nuclear and
Environmental Effects**

Cyber and Networking

**Allies, Space and
Commercial Programs**

Unmanned Systems

Directed Energy



White Sands Missile Range

In addition to missile testing, White Sands Missile Range provides test and training facilities, support and staffing to all branches of the DOD, as well as allies, commercial and private scientific and aerospace customers.

**Think we might be right for your next test?
Contact us at:**

1-866-532-9767

usarmy.wsmr.attec.mbx.team-white-sands@mail.mil

Can't come to us? We'll come to you!

White Sands Missile Range can support testing wherever you are. With our "range in a box" off-site support package, we can enhance any range area in the world bringing our world class test support infrastructure to you.



White Sands Missile Range is an Army Test and Evaluation Command Test Center.

Open to All Military Branches. Roger That.

We're here to help the military
community and their families make
the most of their money.

Visit navyfederal.org to join.



Our Members Are the Mission

Insured by NCUA.

Image used for representational purposes only; does not imply government endorsement. U.S. Air Force photo. © 2021 Navy Federal NFCU 14008-E (12-21)

BUSINESS FRIENDS WORKING FOR THE FUTURE OF WHITE SANDS

SKOOKUM

Skookum provides WSMR with unparalleled facilities maintenance and Heating, Ventilation & Air Conditioning services.

For more information about Skookum and to view our current job openings, visit skookum.org

Located at Building 1741 Sioux Street



TIGUA INC.



TIGUA FACILITY SERVICES



TIGUA TECHNOLOGY SERVICES



TIGUA ENTERPRISES



TIGUA CONSTRUCTION SERVICES

Tigua Inc. supports the U.S. military and federal agencies across a broad range of technological and operational domains that uphold national security.

- Testing/Analysis
- Engineering and Logistics
- Scientific Applications
- Operational Logistics
- Cybersecurity
- Construction
- Janitorial and Grounds Services
- Warehousing Operations
- Facility Maintenance
- Program and Project Management



SBA 8(a)



Indian Economic Enterprise



Primary NAICS Codes: 561210, 236210, 561720, 541513



(915) 298-0700



WWW.TIGUAINC.ORG



12 Leigh Fisher Blvd.
El Paso, TX 79906

DIGITAL HIGH-SPEED CAMERAS



Camera systems for
**range, ballistics, aerospace,
and explosives testing.**

PHANTOMHIGHSPEED.COM

100 Dey Road, Wayne, NJ 07470
+1.973.696.4500

ViSiON / AMETEK®
RESEARCH

When it's too fast to see, and too important not to.®

Partners For Success

For many years, **Tresco** has been an integral part of the growth and development of White Sands Missile Range and our national defense – and for that we **THANK YOU!**



Learn more
Trescolnc.org



(575) 527-2500
FAX (575) 527-0529

SMITH & AGUIRRE CONST. CO., INC.

**DIRT WORK, ASPHALT PAVING,
CONCRETE WORK
SEWER AND WATER
CONTRACTORS**

P.O. Drawer 2276
Las Cruces, NM 88004



Land-Mark Professional
Surveying, Inc.

- Topographic Surveying
- Construction Staking
- GPS / Robotic Systems

1420 Bessemer Drive, Suite 'A'
El Paso, Texas 79936

(915) 598-1300

email: Larry@Land-marksurvey.com

*"Serving Texas, New Mexico
and Arizona"*



**All-American AA, LLC
CONSTRUCTION**

Tony Murguia, CSM (R) - Owner / President
2110 Chris Roark Place, El Paso, TX 79936 915-352-4455 • allamerican082@gmail.com

(SDVO SB)

TABLE OF CONTENTS



MyBaseGuide
501 Great Circle Road
Nashville, TN 37228
www.mybaseguide.com



This Unofficial Guide is an authorized publication for members of the U.S. Army White Sands Missile Range. Contents of the Guide are not necessarily the official view of, or endorsed by, the U.S. government, the Department of Defense, the Department of the Army or White Sands Missile Range. The appearance of advertising in this publication does not constitute endorsement by the Department of the Army or White Sands Missile Range of the firms, products or services advertised.

Everything advertised in this publication shall be made available for purchase, use or patronage without regard to race, color, religion, sex, national origin, age, marital status, physical handicap, political affiliation or any other nonmerit factor of the purchaser, user or patron. A confirmed violation of this policy equal opportunity by an advertiser shall result in the refusal to print advertising from that source. © 2022

WELCOME	4
HISTORY	9
ORGANIZATIONS AND MISSIONS.....	12
COMMUNITY SERVICES & FACILITIES.....	32
NEIGHBORING COMMUNITIES.....	42
QUICK REFERENCE LISTINGS	44



White Sands Missile Range



WELCOME

SHARP
993-0589

Welcome to White Sands Missile Range (WSMR). Whether you are coming for a duty assignment or job, as a test customer or as a visitor, we hope you find your stay with us both worthwhile and enjoyable.

As a test installation, WSMR is unparalleled within the Department of Defense (DOD). As a community, it has that small-town feel. There are many services and facilities on post to make life comfortable and entertaining. People living and working here are warm and friendly. We encourage you to get to know us and explore the area's rich cultural and historical heritage. The information in this guide will acquaint you with WSMR, its major activities, facilities and services.

HOW TO GET HERE

From El Paso: Take the Alamogordo Highway 54 exit off Interstate 10. As you leave the off-ramp, you will be on the Patriot Freeway. Continue through the northeast part of the city to the Martin Luther King/Kenworthy exit. WSMR is straight ahead about 40 miles.

From Las Cruces: Take the Highway 70 east exit from Interstate 10 or 25 and proceed through the city about 25 miles to the missile range exit.

From Alamogordo: Take Highway 70 west. Proceed about 47 miles to the missile range exit.

GENERAL STAFF

- G-1: Personnel
- G-2: Intelligence
- G-3: Operations
- G-4: Logistics

- G-5: Future Plans
- G-6: Signal/Commo
- G-7: Training
- G-8: Resource Management
- G-9: Civil Affairs

CLIMATE

WSMR headquarters has an elevation of about 4,100 feet. This is a dry area with an average annual rainfall about 10 inches. Daily high temperatures in the summer range from 90 to 102 degrees with lows between 65 and 75 degrees. Even with relatively high summer temperatures, the climate is quite comfortable due to low humidity. Daily high temperatures during winter are more variable, with most high temperatures ranging from 45 to 70 degrees and morning low temperatures between 20 and 40 degrees. February into May is the windy season, and occasional storms may generate wind gusts of 30 to 50 knots. Afternoon or evening thunderstorms dominate the monsoon season in July and August.

FOR NEW ARRIVALS

FOR MILITARY NEWCOMERS

575-678-7380/7645

Soldiers reporting during duty hours go to the Installation Military Personnel Division in Building 465, Room 134, to begin in-processing. Army Community Service offers assistance to all new personnel, military, civilians and families arriving at White Sands Missile Range to include a Lending Closet, settling-in services and a monthly newcomer's orientation.

FOR CIVILIAN EMPLOYEES

The Civilian Personnel Advisory Center (CPAC) is headquartered in Building 124.

Personnel advisers are part of the WSMR management team and provide assistance to the command group, managers, supervisors and employees on all human resources issues. Such areas include, but are not limited to: labor-management negotiations, management-employee relations, employee benefits, recruitment strategies, position management and classification, local training and nonappropriated fund (NAF) employment.

Recruitment efforts to fill WSMR positions are also the responsibility of the CPAC.

Employment information on positions at WSMR and other Army installations is available at the Army's Civilian Human Resources Agency (CHRA) website, <https://www.milsuite.mil/book/community/spaces/Civ-HR>. Job postings can also be found on the Office of Personnel Management website <https://www.usajobs.gov/>. For specific nonappropriated fund employment information on WSMR, you may contact the NAF Human Resources Office at 575-678-2930.

FOR NEW TEST CUSTOMERS

The White Sands Missile Range Business Development Office serves as the initial White Sands Missile Range point of contact and customer service interface for customers who need Test and Evaluation or Training Range services.

This office provides marketing of WSMR capabilities to prospective customers and develops focused strategies to attract additional workload in various key business areas. It is responsible for the development and execution of the WSMR Marketing Plan, Business Plan and Strategic Plan. These documents are coordinated with all elements on the range and include strategies for achieving near- and long-term goals. This group interfaces with potential customers through prepared professional business development materials, trade show exhibits, WSMR web page content management and staff management of the WSMR Customer Relationship Program. The WSMR Business Plan includes an internal investment strategy of current and future range capabilities along with customer test development plans. This division also relays emerging customer test requirements to range professionals for future technology development, coordinates transformation issues and assesses implied mission impacts throughout the White Sands Test Center.

Interested customers can find out additional information about testing or training on the range by calling 866-532-9767 (toll free) or by



The White Sands Museum complex includes Missile Park with more than 60 examples of the items tested here since 1945.

emailing usarmy.wsmr.atec.mbx.team-white-sands@mail.mil. Customers may also gather initial information on test facilities, instrumentation and capabilities at the WSMR website, www.wsmr.army.mil/testcenter/dbwws.

TEMPORARY LODGING

The InterContinental Hotels Group (IHG) Army Hotel provides 24-hour service with guest accommodations comparable to off-post hotels within the civilian community. IHG facilities are composed of 64 rooms that include queen-size beds, double beds and suites. We also offer fully furnished two- and three-bedroom houses and two elaborate Distinguished Visitor Quarter suites.

Complimentary breakfasts, a weekly social 5 to 7 p.m. each Wednesday, courtesy shuttle services, free laundry facilities and IHG's award-winning Priority Club Reward's program are some of the amenities that IHG Army Hotel is proud to offer. Also, IHG is pet-friendly for travelers with pets.

Accommodations are open, based on availability, to everyone and can be booked through our centralized reservations system, either by calling 575-678-1838 or by making online reservations at www.ihg.com/armyhotels. Group reservations may be made by calling 575-678-1838.

LIVING HERE

White Sands Missile Range has family housing units and unaccompanied personnel housing (UPH) units. WSMR participates in the Army's Residential Communities Initiative (RCI) Program. White Sands Homes, professionally managed by Balfour Beatty Communities, offers three- and four-bedroom homes

available for both active duty and civilian employees. Community members can enjoy on-site management and maintenance, a dog park, playgrounds and a lighted jogging trail. For more information or to schedule a tour, visit www.whitesandshomes.com or call 575-674-2463.

THE HOUSING DIVISION

The Housing Division provides housing services and assistance to all military personnel and on a space-available basis to Department of Defense civilians and their families. The office provides relocation assistance and referral services for off-post housing. The unaccompanied personnel housing section provides barracks rooms and furniture support for all single service members in the grade of Sergeant and below and ensures the quarters are maintained and furnished to regulatory standards. The Housing Office is also the liaison between the government and Balfour Beatty Communities, our privatized family housing partner. At this time, and dependent on occupancy rates, all personnel, active duty (including geographical bachelors), DOD civilians, retirees and contractors are welcome to stay in privatized housing on post. The Housing Services Office (HSO) provides off-post rental and housing counseling services for military families and single Soldiers. For more information, call 575-678-4691.

All incoming service members must report to the Housing Services Office before making housing arrangements.

HOUSEHOLD GOODS

Are you expecting household goods or baggage? If so, contact the Personal Property



African Oryx call WSMR home.

Processing Office (PPPO) to advise where you may be contacted upon arrival of your household goods (HHG). Call the PPPO at 575-678-3506/5005 or email usarmy.wsmr.asc-lrc.list.lgtp@mail.mil. The office is on the second floor of Building 143 Crozier St. The shipment or receipt of HHG can be personally arranged by using www.move.mil. Any questions about coordinating your own move not covered at the www.move.mil help site can be directed to the PPPO. Claims for HHG can also be completed on www.move.mil.

When your shipment arrives, check your goods against the original inventory. If there is loss or damage in addition to the exceptions taken by the driver at origin, annotate such loss or damage on your copy and on the driver's copy of the inventory prior to signing for receipt of the shipment. When possible, take a photo of the damage to your HHG. The PPPO will furnish copies of the necessary paperwork so that a claim for damages may be filed through the legal office. Once you receive your paperwork from the PPPO, go to <https://www.jagcnet.army.mil/Pclaims> for more information on how to file a claim (to include the trifold on the A, B, Cs of Claims) or call the center at 502-626-3000 or DSN 536-3000 with questions. You can also email the Center for Personnel Claims Support (CPCS) at usarmy.knox.hqda-otjag.mbx.cpcs@mail.mil.

SOME THINGS TO KNOW

THINK SAFETY

The nature of WSMR missions can create hazards to employees and visitors.

White Sands Missile Range has been used as an ordnance and explosives test facility since its inception as a proving ground in 1945. Prior to that, some areas of what is now the southern

part of the range were used as artillery impact areas by troops training at Fort Bliss.

As a multiservice DOD range, nearly every type of deployable ordnance developed in America since 1945, as well as many items from other countries, has been tested here. Some of these items were deliberately designed to blend in with the terrain, and their presence may not be immediately obvious to a casual observer.

In general, if you see something man-made while on the range, please avoid it. Do not disturb the item or the area immediately surrounding it. If it looks like an ordnance item, report it by calling 575-678-1234.

Unexploded ordnance training is provided for all employees by their organization and to visitors leaving the main post area by their sponsor or escort.

Drivers on and around White Sands Missile Range should be aware of the driving hazards presented by wildlife, in particular, a type of African antelope known as an oryx. Oryx are the most prevalent wildlife hazard to motorists traveling through the range. Other wildlife such as mule deer and pronghorn may be encountered along the roadways as well.

TRAFFIC LAWS AND REGULATIONS

Traffic laws and regulations at White Sands Missile Range are strictly enforced, and safety is emphasized, including IAW New Mexico traffic laws, Army Regulation AR 190-5 and WSMR Traffic Regulation 190-5. Violators will stand trial before a U.S. federal magistrate court for violations to traffic laws and regulations. Incidents involving military regulations are referred to unit commanders or section chiefs for action. All vehicles must have a current vehicle registration and current insurance. A

valid driver's license is required for anyone entering and operating on the installation.

Military motorcycle operators have the additional requirements to have completed a motorcycle safety operator's course, have a motorcycle endorsement on their driver's license and to wear personal safety equipment. Civilian operators do not require the safety course.

WSMR does not allow concealed or open carry of firearms. WSMR Regulation 215-1 covers the requirements for privately owned weapons storage, transportation and registration. Registration of firearms is conducted at the WSMR Police Station, Police Records section.

Unmanned Aerial Vehicles or drones are not authorized to be operated on the WSMR installation or any range areas unless specifically authorized by the WSMR Commander or his designated representative.

VISITOR PASSES/ACCESS CONTROL

Visitors to the White Sands Missile Range main post must stop at the Visitor Control Center outside the Las Cruces Gate or at the El Paso Gate to get a visitor pass. Current Army Policy requires that all personnel over the age 18 submit to and pass the required National Crime Information Center - Interstate Identification Index (NCIC-III) background check prior to being granted access. The driver of the vehicle must show a valid driver's license, vehicle registration and proof of insurance. If driving a rental car, the rental paperwork is shown in lieu of vehicle registration. For



Trinity Site, where the first atomic bomb was tested, is located on the missile range.

more information, call the Visitor Center at 575-678-1099 or 575-678-5605.

If visiting other than the WSMR Museum, visitors must have WSMR point of contact information to include name and a WSMR phone number to verify contact before visitor's entry onto the installation is authorized. Foreign nationals must make prior arrangements with the foreign disclosure officer (FDO) (575-679-6353) prior to obtaining a visitor pass. Once approved by the FDO, further arrangements will be made with DES Physical Security Office at 575-678-7626. See instructions in the "Foreign National Visitors" section.

SMR also recognizes holders of the Survivor Outreach Services Card, which provides for surviving immediate family members of service members who died in active duty members of the uniformed services Access to the installation for the purpose of receiving services from the Army Community Services Office. For more information on this program, commonly referred to as the "SOS" program, contact the WSMR ACS office at 575-678-6767.

WSMR also recognizes holders of the Department of Veterans Affairs issued Veteran's Health Identification Card. Possessors of this ID are authorized entry onto the installation to shop at the exchange and commissary and access select Family, Morale and Welfare events and services. For more information regarding this ID and associated benefits, please contact your local Veterans Affairs office.

Please note that personnel in possession of either the SOS ID card or the VHIC ID card ARE NOT authorized to vouch for or otherwise escort others in their vehicles onto the installation. Other occupants must be processed and be issued installation access passes IAW established requirements as discussed above under VISITOR PASSES.

SECURITY

Security is taken seriously at WSMR. All vehicles entering the White Sands Missile Range are subject to search. For access, one must establish an official need to enter the range and possess the proper identification documents. Non-CAC card holders must obtain a pass at the Visitor Control Center at the Las Cruces Gate. If access to classified defense information is required, personnel must be properly identified and must have security clearances certified by their respective security office. All visitors 16 years and older must have an official government-issued identification with photo.

ACCESS TO SECURITY AREAS

Personnel requiring access to security areas must be properly identified and will be

authorized access on a need-to-know basis in performance of official duties. Personnel requiring access to security areas without proper WSMR identification must be escorted by an authorized employee at all times.

FOREIGN NATIONAL VISITORS

The FDO is responsible for properly handling official activities involving foreign nationals. All official foreign contacts with the Army must be requested by diplomatically accredited military attaches on behalf of their government.

All official visits by foreign nationals to WSMR and official contact with U.S. government representatives require advance notification and approval by the FDO. After receiving the visit request, the FDO will staff it through the proper authorities for final approval.

Call the WSMR FDO at 575-679-6353 for advice and to receive the procedures on specific situations that may involve foreign nationals, governments or international organizations.

PHOTOGRAPHY

Personal photography on White Sands Missile Range is prohibited except in the following areas of the main cantonment, Stallion cantonment, special events and general public big game/restricted access hunts. Areas generally open to the public: WSMR Museum/Missile Park, Frontier Club, bowling center, Bell Gym, Desert Emerald Green Recreation Area, Organ Mountains Parade Field, Volunteer Park, athletic fields, Youth Services facility vicinity, day care center (with acknowledgement from staff), Post Exchange, Post Theater, Post Chapel and Sierra Chapel, White Sands Elementary and Middle School and the skeet range.

DFMWR events held at the Small Arms Range area, unit/organizational training events at the Small Arms Range area and within the main cantonment, ceremonies and special events that include Thanks Team WSMR Day, Organization Day, Trinity Site Open House, the Bataan Memorial Death March, and athletic and sporting events.

Photography for office, organizational functions or socials in the workplace are permitted, however caution should be exercised, and photographs should NOT include For Official Use displays, maps and computer monitor screens. Final approval for these types of events resides with the organizational Commander of Director.

White Sands Missile Range Installation Hunting Program permits hunters to take limited still photography during General Public Big Game hunts and during Restricted Access. Photography is limited to photographs of hunters, guests and their respective harvested animals. Photography of general landscapes, wildlife or manufactured features is PROHIBITED. WSMR officials have the authority to review all photographs and will delete or confiscate any that are deemed sensitive.

All other areas require official photo permits. All photography/video requests will be transmitted electronically to the Visual Information Branch at 575-678-1100 for review and approval. Photography of other missile range areas is strictly limited to authorized official photographers.



PHOTO BY JIM ECKLES

Mexican poppies paint the landscape a creamy yellow. The Organ Mountain Range provides a magnificent backdrop to the White Sands community.

BATAAN MEMORIAL DEATH MARCH

White Sands Missile Range is home to the Bataan Memorial Death March. This annual event is one of the Army's largest memorial marches and is renowned as one of the toughest marathons in the United States.

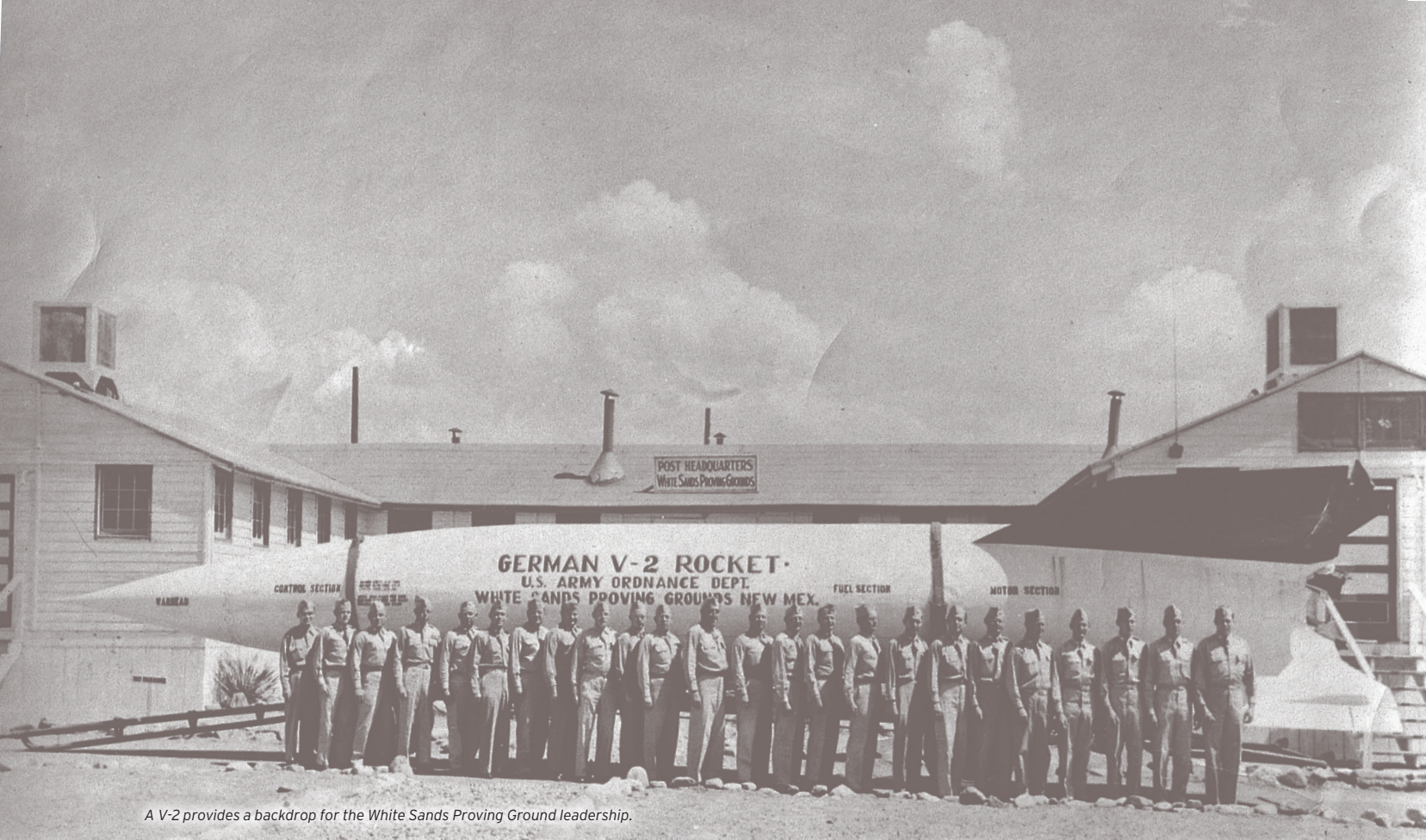
This trek through WSMR's high desert terrain attracts thousands from across the nation and around the world each spring. Participants may choose from a 26.2-mile course or a 14.2-mile course.

The memorial march honors a special group of World War II heroes who defended the islands of Luzon and Corregidor and the harbor defense forts of the Philippines. On April 9, 1942, they surrendered to Japanese forces and marched for days through the jungles. Thousands died. Those who survived faced the hardships of prisoner-of-war camps. Others were wounded or killed when unmarked enemy ships transporting prisoners to Japan were sunk by U.S. air and naval forces.

Members of the WSMR community are urged to be a part of this great event either as a participant or a volunteer worker. For more information, visit www.bataanmarch.com.



PHOTO BY JADZIA RODRIGUEZ



A V-2 provides a backdrop for the White Sands Proving Ground leadership.

HISTORY



HOW IT ALL BEGAN

In early fall 1944, as a result of America's accelerated missile program, it became evident that a land range somewhere in the United States would be required so missiles could be test fired and recovered after flight for further study. These studies would provide data to help develop future missiles for the military.

A group of specially selected officers and civilians representing the War Department and the Corps of Engineers visited all sites designated as "possible." One area, in the Tularosa Basin of southern New Mexico, fit the bill. It would eventually become White Sands Proving Ground (WSPG).

In a real estate directive dated Feb. 8, 1945, the seeds for WSPG were sown. This document declared the area to be of military necessity. The majority of selected land that would make up WSMR was already under the control of the War Department. It was comprised of the Fort Bliss Antiaircraft Firing Range, Dona Ana Target Range, Castner Target Range and Alamogordo Army Air Field's Alamogordo Bombing Range.

In addition to acreage controlled by the Army, other public domain and private lands would be added in the following years to comprise the new proving ground.

Work at the desert site began in June 1945, as buildings and roads were constructed from plans prepared two months earlier. Since the prevailing attitude was that WSMR would only be a short-term project, temporary buildings such as old Civilian Conservation Corps structures and a hangar were moved here from Sandia Base in Albuquerque, New Mexico. An Army Forces circular dated July 13, 1945, officially announced

the July 9 establishment of WSPG. Lt. Col. Harold R. Turner was its first commander.

In the early years, Fort Bliss was responsible for most of the administrative and supply services at WSPG. The impact area north of the main post (the Alamogordo Bombing Range) was still under the jurisdiction of the Army Air Corps.

The Army's first launch area, now referred to as Launch Complex 33, was established 6.5 miles east of the headquarters area. To provide protection for personnel and equipment at the launch site, the Army built a reinforced concrete blockhouse. Construction of the Army blockhouse began July 10. It was followed by the addition of concrete launching pads, a wooden observation tower and a 75-foot service gantry with 2,000 feet of track.

In mid-August 1945, 300 railroad freight cars of V-2 components captured in the European theater of operations arrived in New Mexico. The Santa Fe Railroad spotted 10 cars per day in Las Cruces, New Mexico, for unloading and transport by military personnel to WSPG on the east side of the Organ Mountains.

To get an idea of the magnitude of the logistics challenge, every railroad siding from El Paso, Texas, to Belen, New Mexico, a distance of 210 miles, was full of railroad cars. The Army hired every flatbed truck in Dona Ana County to move the material. The task was completed in 20 days.

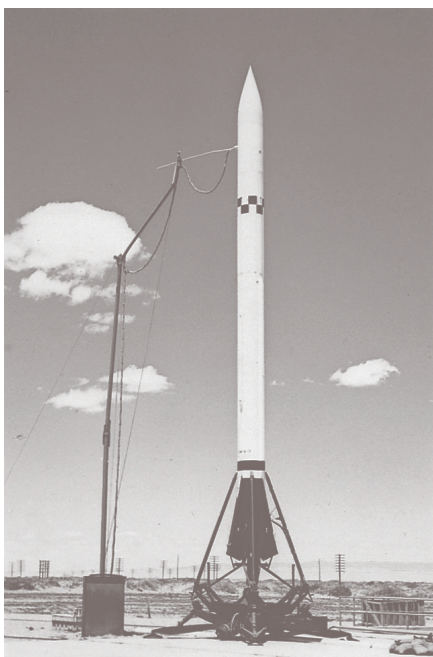
Meanwhile, the new proving ground celebrated its first milestone with the launching of a modified Tiny Tim booster rocket Sept. 26, followed



Personnel prepare for a firing inside the Launch Complex 33 Army Blockhouse.

by a dummy WAC Corporal rocket the next day. The remaining months of 1945 saw an influx of troops arriving for duty at WSMR. Testing continued as contracts were let for more permanent structures at both the firing facilities and in the main post area.

In 1946, WSMR began its famous modified V-2 launches. These continued through 1952. Meanwhile, the Navy signed on at WSMR with the construction of a naval cantonment area



A Corporal missile stands ready to launch in the desert. It was America's first designed, engineered and fabricated surface-to-surface missile.

just west of the Army headquarters. In addition, launching facilities for the Navy were constructed 2 miles east of the Army's launch complex.

Stationed at Fort Bliss were members of the "Paperclip Crew," Germans who had worked with the V-2 development team. The crew was headed by the famous aerospace engineer Wernher von Braun. They traveled daily to the proving ground to work with American scientists and engineers in assembling and launching the modified liquid-fueled V-2s. The vehicles were 46 feet long and 5.5 feet in diameter and could develop 56,000 pounds of thrust. These V-2s, launched from WSMR with their scientific payloads, set a variety of firsts for America's space program. Milestones included achieving the first high-altitude and velocity records for a single stage rocket. A V-2 was the first large rocket to be controlled in flight. During the U.S. program, about 70 V-2s were fired at WSMR.

U.S. Highway 70 runs north of the Army's launching area. To accommodate the new science of rocket and missile testing at WSPG, permission was needed from the state of New Mexico to block the highway to safeguard the well-being of travelers. Application was made to the New Mexico State Highway Department. WSPG received a letter, dated Nov. 15, 1948, declaring Highway 70 a military highway subject to periodic closing to the public.

White Sand's borders began to take shape Aug. 19, 1952, when the Department of Defense moved control of the area known as the Alamogordo Bombing Range from the Air Force to WSPG. The change was part of

a plan for an integrated range. A year later, on Oct. 6, 1953, the Department of the Army defined the boundary line between WSMR and Fort Bliss. With the inclusion of the Alamogordo Bombing Range territory, WSPG inherited one of the world's most historic pieces of property – Trinity Site.

During World War II, the Manhattan Project needed a piece of isolated land to test an atomic device in its quest to develop an atomic bomb. A section of desert in the northern part of the bombing range was selected. Trinity Site is 90 miles north of the main post, near U.S. Highway 380 and the small town of San Antonio, New Mexico. In the predawn hours of July 16, 1945, the first atomic device was detonated at Trinity Site.

By the close of 1955, the proving ground contained a miniature city, offering modern conveniences to those who resided on post. Apart from the barracks buildings, there were 430 housing units and 93 trailer spaces with gas, water, sewer and electrical facilities. A branch U.S. post office and a branch bank were in operation. A post newspaper was published weekly. Telephone and telegraph facilities, as well as a service station, were available. To fill the educational and religious needs, an elementary school, a post chapel and a Sunday school were built.

Because there weren't enough on-post quarters for both military and civilian personnel, government buses furnished daily transportation for those who lived in the surrounding communities.

A Department of Army General Order dated April 29, 1958, effective May 1, officially redesignated WSPG as White Sands Missile Range (WSMR).

The 1950s also saw development of other missiles and rockets built on the V-2 experience. These included the Sergeant, Redstone and Nike series. The Nike series began with the Nike Ajax anti-aircraft defense missile and continued with the development of the Nike Hercules and Zeus missiles.

In 1963, the missile range established off-range launch sites and flight corridors ranging as much as 400 miles from WSMR. These test sites were at Green River and Blanding, Utah, as well as Fort Wingate and Datil, New Mexico. Athena re-entry vehicles and Pershing ballistic missiles were launched from these off-range sites frequently during the '60s and early '70s.

Another famous missile system that had its humble beginnings at the missile range in the early 1970s was the Patriot air defense missile. The Patriot gained notoriety during Operation Desert Storm.

On March 30, 1982, WSMR made history when the Space Shuttle Columbia landed at the range's Northrup Strip. The landing marked the end of the third test flight in the shuttle series and proved the craft could land in different locations under a variety of conditions. An act of Congress changed the name of the landing site to White Sands Space Harbor.

White Sands Missile Range entered the field of laser technology in 1983, with the establishment of the High Energy Laser Systems Test Facility. A milestone was achieved six years later, Feb. 23, 1989, when the Navy's Mid-Infrared Advanced Chemical Laser destroyed a missile flying at supersonic speeds.

In October 1985, the Launch Complex 33 gantry and blockhouse were designated a National Historic Landmark by the National Park Service. A Hermes A-I missile, on permanent loan from the Smithsonian Institution, had been placed in the gantry and dedicated in August 1984.

The missile range was the site of a series of launches of the Delta Clipper Experimental Vehicle from 1993 to 1996. Launch and hover tests conducted at White Sands Space Harbor were to pave the way for new types of reusable rockets.

In recent years, WSMR has tested numerous systems that have made contributions to America's defense, such as the Army Tactical Missile System and variations of the Multiple Launch Rocket System. In 1996, WSMR once again began using its off-range site at Fort Wingate to launch target missiles for theater missile defense programs, such as the Terminal High Altitude Area Defense System and the Patriot Advanced Capability-3.

In spring 2000, the state-of-the-art Cox Range Control Center was dedicated, bringing a new age of testing to the missile range.

In 2008, the 2nd Engineer Battalion (Combat) was activated on WSMR, becoming the only FORSCOM unit on post and the only active-duty Army battalion in the state of New Mexico. During Army restructuring in 2014 the 2nd Engineer Battalion left WSMR. In 2014 the 3rd Battalion, 6th Air Defense Artillery, Patriot Test Detachment was activated. The detachment provides the expertise and knowledge necessary to test future air defense systems.

WSMR takes great pride in its heritage and looks forward to continuing its testing and training efforts well into the future on behalf of the American warfighter.



White Sands first graders on the first day of school in 1953.



WSPG Officers' Wives Club takes a tour of the V-2 launching site and pose for a group shot in 1950.



Paratroopers from the 82nd Airborne Division drop onto White Sands Space Harbor during the Network Integration Evaluation. The NIE is used to evaluate Army systems and networks used by Soldiers in the field.



ORGANIZATIONS AND MISSIONS

TEAM WHITE SANDS

White Sands Missile Range is the largest overland military test range in the United States, occupying some 3,200 square miles of southern New Mexico. Some of the world's most advanced and sophisticated weapon systems are tested at the missile range each year. White Sands Missile Range organizations are known collectively as Team White Sands, each possessing a unique set of capabilities.

COMMANDING GENERAL, WHITE SANDS MISSILE RANGE

White Sands Missile Range is a subordinate organization of the Army's Test and Evaluation Command (ATEC), which is a direct reporting unit under the chief of staff, Army. The general officer position is the senior commander on the installation and serves as the commanding general of WSMR. Staff organizations that report to the commanding general (CG) include the executive director, the chief of staff, installation safety/nuclear surety director, equal opportunity and the Staff Judge Advocate. The Public Affairs Office, Protocol, Process Improvement Office, Range Commanders Council, G1/7/8, G2, G3, G4, G5, G6 and G9 report to the chief of staff. Many of the staff organizations provide support to the CG as well as to other organizations on this installation. The test organizations are within the White Sands Test Center and discussed in a later section. The commander/director of the test center reports to the CG on test and evaluation issues. The G1/7/8 is tasked with managing the financial and manpower resources for the command. Additionally, managerial accounting, budgeting, management and manpower analysis are performed to support the operations of the command.

THE PROCESS IMPROVEMENT OFFICE

The Process Improvement Office serves White Sands Test Center by analyzing and improving its work processes using Lean Six Sigma methods. Lean Six Sigma is a customer-centered, systematic, data-driven approach to process improvement aimed at the near-elimination of defects from every process. Lean Six Sigma can be used for any activity that is concerned with cost, timeliness and quality of results. Lean Six Sigma eliminates excessive transportation, motion, inventory, waiting, overprocessing, overproduction and defects. For more information on using Lean Six Sigma for process improvement, call 575-678-5650.

PROTOCOL OFFICE

The Protocol Office provides guidance in creating itineraries in support of distinguished visitors (O-6 and above and civilian equivalent) to the WSMR command. It provides guidance and support for command ceremonies and special events hosted by the commanding general. It also provides protocol advice to subordinate commands and community organizations. The Protocol Office plays an integral role during the preparation and execution of distinguished visits and events to ensure proper courtesies are rendered. For more information, call 575-678-1038 or email usarmy.wsmr.atec.list.protocol@mail.mil.

INSTALLATION SAFETY OFFICE

The Installation Safety Office (ISO) is a technically complex safety organization consisting of safety professionals from both the Garrison and Mission Safety. The ISO oversees the safety of 19 tenant activities operations on WSMR. The Installation Safety Office is committed to the

health and safety of WSMR military, civilian employees and contractors. The White Sands Missile Range command safety philosophy is that the only acceptable level of injuries or incidents is zero. To achieve this, we will continuously improve our processes, require individual accountability and promote comprehensive safety awareness. We expect all military, civilian employees and contractors to be constantly mindful of potential hazards, faithfully adhere to our safety standards and actively participate in and support the advancement of our health and safety practices. Everyone shares in the responsibility of safety. The ISO also provides planning and direction for the dynamic Installation Nuclear Surety Program. For more information, call 575-678-2305 or email usarmy.wsmr.atec.mbx.safety@mail.mil.

U.S. ARMY GARRISON, WHITE SANDS (USAG-WS)

The U.S. Army Garrison provides White Sands Missile Range the capabilities and services that support expeditionary operations in a time of persistent conflict, provides the facilities and services to allow the tri-service testing and integration of our nation's weapons and sensors, and provides a quality of life for our Soldiers and families commensurate with their service.

Key Tasks

- Provide administrative services to acquire, support, educate and retain a quality workforce that meets the manpower needs of the Army.
- Provide for the physical, behavioral and spiritual fitness of the WSMR community.
- Provide a safe and secure work environment and high quality of life for WSMR residents.
- Comply with all federal, state and local environmental, cultural, historical and hazardous materials laws and policies.
- Provide the infrastructure and facilities to adequately house families and Soldiers, train Soldiers and test equipment.
- Ensure the safety and health of the garrison and tenant workforce.
- Prevent unlawful discrimination.
- Set the conditions to maximize the contributions of every employee and Soldier.
- Organize and support events for official visitors.
- Provide a quality of life to Soldiers and their families that is commensurate with their service.

THE PLANS, ANALYSIS AND INTEGRATION OFFICE

The Plans, Analysis and Integration Office conducts analytical reviews; monitors Army

baseline standards; captures and enables implementation of best business practices; and identifies, tracks and orchestrates reporting of performance measures. This office is the garrison commander's focal point for the Installation Strategic and Sustainability Plan and hosts the Installation Planning Board. For more information, call 575-678-1829.

DIRECTORATE OF PLANS, TRAINING, MOBILIZATION AND SECURITY (DPTMS)

The DPTMS is the principal garrison staff agency for all matters concerning installation plans, antiterrorism, emergency management, and garrison operations and security. The directorate manages two closely linked programs that protect the installation, its resources and its people from both man-made threats and natural disasters – the Installation Antiterrorism Program and the Installation Emergency Management Program.

The directorate also serves as the entry point for requirements levied against the garrison, maintains the long-range calendar and synchronizes our efforts to ensure we continuously work toward common goals.

The Security Office administers the garrison security programs to include security education and training, personnel security and information security. This office provides procedural guidance, advice and assistance for Army G2 security programs to all garrison activities. Additionally it supports processing of background investigations and administers security clearance actions, reporting adverse information under the continuous evaluation program.

The Plans and Operations Division prepares and coordinates operational, emergency, disaster and antiterrorism policies and directives for the installation. The antiterrorism

officer manages the programs designed to protect our personnel, assets and capabilities from terrorist attacks, to include the insider threat. The emergency management officer ensures the integration of all crisis response planning on the installation, coordinates with civil agencies for military support to civil authorities and is responsible for the installation Emergency Operations Center (EOC). This office also coordinates and directs installation matters pertaining to exercises and the use of the small arms range complex.

DIRECTORATE OF EMERGENCY SERVICES

The Directorate of Emergency Services (DES) provides law enforcement, physical security/access control, execution of force protection measures, fire/rescue emergency response and fire prevention/education support to the White Sands Missile Range community.

The White Sands Missile Range Fire and Emergency Services Division is committed to providing the highest level of broad-based fire, rescue and emergency medical services to those entrusted in our care. The fire department also provides fire facility inspections, plan reviews, fire prevention and education training. We will work to prevent harm to people, personnel, government property and the environment through education, training and prevention programs. Emergency phone: 575-678-1234. Non-emergency phone: 575-678-3585/4187. Email: usarmy.wsmr.imcom-central.list.fire-prevention-office@mail.mil.

The DES, Law Enforcement Division is responsible for coordinating the daily operations of law enforcement patrols, physical security and the DES police station. These functions include police patrols, specialized law enforcement training, criminal investigations, liaison



Memorial Gardens dedicated during Memorial Day ceremony. White Sands Army Community Services teamed up with Garrison leadership to rededicate the formerly known Volunteer Park in honor of those who paid the ultimate sacrifice.



Radar specialists work with the Multiple Object Tracking Radar, which can track as many as 40 objects at a time.

with civilian law enforcement agencies, traffic accident investigations, stray animal control, funds escort and support to Game Conservation Law Enforcement. DES police patrols are responsible for enforcing all laws, regulations and policies; deterring and detecting crime through motorized, walking and bicycle patrols; responding to calls for police assistance; assisting stranded motorists; speed enforcement and traffic accident investigations; investigations of law violations; access control; special events security; traffic control; and providing law enforcement duties during sanctioned hunts.

The DES dispatch serves as a consolidated fire and police 911 dispatch and alarm center, responsible for receiving, coordinating and dispatching all emergency responders to incidents on the White Sands Missile Range, and can assist in general information requirements. The DES Police Administration Section provides

administrative support to the White Sands Police Station and to the installation. Activities include processing reports; conducting queries for statistical data documents; assisting in traffic tickets and assessment of traffic points; and transmitting and receiving reports from federal, state and local law enforcement agencies. The office coordinates the issuance of bars for access to the installation, coordinates the driving privilege revocation or suspension letters for operating a motor vehicle on WSMR, and provides police reports to law enforcement, legal section and customers. This section also provides crime and traffic accident statistics to the director of emergency services, the installation and its tenant units to provide commanders/directors with the necessary information to make security and safety decisions based on these statistics. For more information, contact 575-678-1234/7675.

DIRECTORATE OF HUMAN RESOURCES

The Directorate of Human Resources (DHR) provides individual, family and community support services and programs for Team White Sands. The directorate coordinates, recommends and provides authoritative analysis, advice and services, enabling commanders and directors to provide leadership in executing their military and garrison civilian personnel management responsibilities. In addition, the directorate helps maintain readiness of units, individuals, families and communities by developing, coordinating and delivering social service programs and education services that promote self-reliance, resiliency, professional development and stability.

The Military Personnel Division (MPD) is responsible for providing military personnel manning and support functions for the garrison and other resident organizations. The office provides information on military personnel requirements, authorizations, levels of fill and distribution of personnel resources, and readiness management. Soldiers, family members, DOD civilians/contractors and retirees are provided with a wide range of personnel services support that includes (where applicable) military personnel records support, sponsorship, military awards, identification cards, official passports, retirement services, personnel automation, consolidated in- and out-processing, mobilization processing and reassignment processing, as well as assistance with the Soldier for Life-Transition Assistance Program. The office is also a liaison in support of Army Casualty, Mortuary Operations and Memorial Affairs. Hours are 8 a.m. to 4 p.m. Monday through Wednesday, 10 a.m. to 4 p.m. Thursday and 8 a.m. to 3 p.m. Friday. For information, call 575-678-7645.

The Army Substance Abuse Program (ASAP) manager administers the Substance Abuse Prevention and Suicide Prevention programs. These include drug testing, prevention and awareness training to deter and reduce alcohol and other substance abuse. The Employee Assistance Program (EAP) under ASAP is a comprehensive service designed to help employees with problems that affect their ability to do their jobs. The services may include screenings, short-term counseling, referrals and prevention services. Services are available for eligible DOD civilian employees and their families, as well as military family members. For information, call 575-678-1957/2112/4689.

The Fort Bliss Army Continuing Education System (ACES) serves the WSMR community and Soldiers with education services that include education counseling, college programs, financial aid and distance learning;

personnel testing; and leader enhancement. For information, call 575-678-4716 (Mondays only) or 915-568-6792.

The Administrative Services Division (ASD) provides support and services including records management and training personnel under the Army Records Information Management System (ARIMS); stocking of DA, DOD and other forms and publications supporting WSMR organizations; review and processing of all local publications for signature; review and approval of all local forms; administering the Freedom of Information Act (FOIA) and Privacy Act (PA); operation of the Mail & Distribution Center (OMDC), processing all incoming and outgoing official mail; and operation of the Installation Records Holding Area (RHA). For more information, call 575-678-8513.

The Workforce Development (WFD) Program provides information, support and assistance to the Garrison leadership and workforce in furthering personal and professional development; workforce planning and assistance in the development of Garrison employees; helps employees access and master the Army's Centralized Education System (CES) for training and development; and supports the IMCOM framework for how the command supports, develops and manages training and leader/workforce development. For information, call 575-678-5347.

DIRECTORATE OF PUBLIC WORKS

The Directorate of Public Works provides post support services to include public works services and environmental conservation and compliance programs to Team White Sands Missile Range elements and organizations with specialties as follows:

Housing Services (HS) provides relocation assistance and referral services for off-post housing to service members, families and DOD civilians. Housing assists community landlords, Realtors and apartment managers by inspecting their properties and listing them on Homes.mil as approved dwellings for the military community.

Unaccompanied Housing (UH) provides barrack rooms and furniture support and coordinates any service orders required for all single service members in the grade of SGT and below.

The Residential Communities Initiative (RCI) is a liaison between the government and Balfour Beatty. All personnel, active duty (including geographical bachelors), DOD civilians, contractors and general public are welcome to apply for housing on post at White Sands Missile Range. For more information, call 575-678-4691

The Environmental Division provides services in support of Team White Sands to ensure compliance with environmental laws and policies, the integration of environmental sustainability principles of all mission activities, and the conservation and enhancement of natural resources to maintain installation readiness and environmental stewardship to secure the environment for future generations. The support is accomplished through the Customer Support, Environmental Compliance and Conservation branches. For more information, call 575-678-2225.

The Master Planning Division is responsible for comprehensive installation management of government-owned or controlled buildings, structures and other assets. Accountable for the following activities. For more information, call 575-678-2368.

The Operations and Maintenance (O&M) Division maintains the entire infrastructure on WSMR. This includes operating Water/Waste Water treatment plants, maintaining roadways and grounds, and performing everyday maintenance and upkeep of facilities. This division supports contract management as it relates to facility/HVAC Augmentation Contractor, custodial and ground maintenance. This division provides all utility dig permits on WSMR and is responsible for snow and sand removal. For more information, call 575-678-4841.

The Engineering Services Division is responsible for design, contract and project management for new and existing facilities within White Sands Missile Range. The division provides architectural and engineering services, Computer Aided Drafting and Design (CADD) and installations' Sustainment Management System (SMS), i.e. BUILDER, PAVER and ROOFER upkeep. For more information, call 575-678-8744.

The Business Operations and Integration Division (BOLD) is responsible for mission

support. Support is given on a work order/service basis and can be submitted 24 hours a day through e-DPW. Facility representatives may be obtained by sending a completed DD 577 form to usarmy.wsmr.imcom-central.mbx.dpw-service-desk. BOLD is comprised of two branches. For more information, call 575-678-7098.

GARRISON RESOURCE MANAGEMENT

Garrison Resource Management oversees resource allocations for all support activities, including budget formulation, control and execution; accounting policy; funding manpower resources; developing installation support agreements; providing customer service for payroll; monitoring the Government Travel Card Program; and providing accountability to the American public. Call 575-678-2204.

The Budget Division is responsible for programming, budgeting, controlling and administering the use of appropriated funds. It serves as the principal point of contact below the garrison command group for solving problems in the resource management arena. Call 575-678-1821 for more information.

People are the Army's most important resource. **The Manpower Division's** challenge is to ensure White Sands Missile Range organizations have the right number of people to do the job and an efficient organizational structure to best use its personnel. Call 575-678-2820 for more information.

The Management Analysis and Agreements Division manages a variety of programs in support of the garrison mission. It works with customers to coordinate management improvement programs, principles and practices to achieve efficient and effective operations. Call 575-678-1998 for more information.

Payroll Customer Services Division manages a variety of programs in support of the



The Cox Range Control Center is named in honor of ranch families who owned and worked the land before the establishment of the missile range.

ORGANIZATIONS AND MISSIONS

WSMR mission. It is responsible for applying a working knowledge of payroll procedures and requirements pertaining to pay, leave and benefit deductions. It receives and processes documents from employees to authorize changes that affect their payroll account to include address changes, allotment initiations and changes, and changes in tax status (W-4s). For information, call 575-678-3366.

WHITE SANDS TEST CENTER

The White Sands Test Center (WSTC) is responsible for planning and conducting tests at White Sands Missile Range. The center command position is a board command-selected position from the assistant secretary of the Army for Acquisition, Logistics and Technology ASA at the colonel or GS-15 level. WSTC reports to the U.S. Army Test and Evaluation Command. Call 575-678-1959.

An integral part of test operations, Army Air Operations (WSA) operates four UH-1H Huey helicopters, five UH-60 Blackhawk helicopters and a C-12 King air twin turboprop aircraft to support on- and off-range test customers. The fleet is used to search and recover critical test components. The UH-1s and the C-12 can be modified with various instrument packages, sensors and payloads to support test missions. All WSMR aircraft can be used as photo/chase platforms. WSA helicopters are also capable of external load operations.

RANGE OPERATIONS DIRECTORATE

The Range Operations Directorate (RO) establishes and implements policies, programs and procedures; coordinates range operations and data measurements; and has complete flight safety control for all missiles, rockets, munitions and other devices launched from or into WSMR, or which pass through WSMR controlled airspace.

The directorate conducts flight safety management, schedules and controls all range operations, and operates a vast inventory of instrumentation used in the test and evaluation of systems and weapons. Data are collected on any variety of assets such as missiles, rockets, aircraft, bombs, munitions, ground systems and targets. The primary data collection systems are telemetry, radar, optics, Global Positions System (GPS), timing, meteorology and remote target control. Various instrumentation systems are used to receive, record and relay test data. This data is processed for real-time display at facilities where test conductors, flight safety officers and range controllers monitor and manage the test. Post mission, the data is used for comprehensive analysis of a given test. An important test enabler capability is the White Sands Integrated Target Control System (WITS). The WITS enables the range to provide target presentations for weapons tests. The WITS is fully certified to control a wide variety of targets to include both full-scale drones (e.g., QF-4 and QF-16) and subscale aircraft drones. As a full-service system, the WITS also controls dynamic ground vehicles such as consumer and tactical assets that range from pickup trucks to tanks. Instrumentation systems are available for measuring basic physical properties, including mass, temperature, force, pressure, position, velocity and acceleration. Acoustic and electro-optics instrumentation is also available, including visible and infrared imaging and nonimaging systems. Virtually all test support capabilities are transportable to enable the range to reconfigure as required to support specific test program requirements. This ability also enables the range to regularly "safari" test support to locations worldwide. In addition to traditional range instrumentation, the directorate operates

the Aerial Cable Range (ACR). The ACR is a 3-mile-long Kevlar cable strung between two mountain peaks. Large targets can be suspended and rocket-propelled down the cable or drop-tested.

For more information, visit the WSMR website at www.wsmr.army.mil or call 575-678-2400. Write to: Director, Range Operations Directorate, White Sands Missile Range, NM 88002.

MATERIEL TEST DIRECTORATE

The Materiel Test Directorate (MT) provides evaluation of systems, materiel and equipment through field, laboratory and sponsors testing on WSMR for DOD, foreign, space and industry customers. Throughout its history, MT has tested a wide variety of hardware, both U.S. and foreign. Among these are air defense missile systems, including the Stinger, Terminal High Altitude Area Defense (THAAD) interceptor, Patriot/Patriot Advanced Capability-3 (PAC-3), surface-to-surface rocket and missile systems including Multiple Launch Rocket System (MLRS) and its variants (guided and unitary), High Mobility Artillery Rocket System (HIMARS), Army Tactical Missile Systems (ATACMS) and various unmanned aerial vehicles.

The testing of today's complex systems continues to dominate the MT workload. A typical test program will include several components: the review of system performance requirements; the development of detailed test plans; tests ranging from component, subsystem and system to software verification; validation of human factors assessments; and finally, the firing of rockets and missiles.

At each testing step, data are collected and analyzed. Finally, overall system assessments are made to assure systems are ready for Soldiers in the field. To accomplish the complex task of testing, a core team consisting of a project engineer, systems analyst and test conductor is formed. The project engineer is the focal point for all project-related test activities. He or she is responsible for planning, coordinating, executing and reporting test results and associated data analysis. The test conductor is responsible for accomplishing the test program and for directing the actual test efforts.

A key activity in the successful development and execution of an effective test program is system analysis. Systems analysts are assigned to each project to develop and implement a comprehensive test and evaluation program. Throughout a given program, analysts review the test requirements, develop detailed test plans, and monitor the collection of data during test and simulation activities. Upon completion of the test program, results are assembled to quantify the system's



A target used during testing at the Aerial Cable Range.

performance. These assessments, along with data accuracy and confidence-level quality indicators, are presented in final test reports.

Explosive testing capabilities include facilities for safety tests such as fire, drop, bullet impact, sympathetic detonation and others. Warhead arena tests, warhead penetration tests and failure analysis of explosive components also are available. Maximum data collection for failure analysis on lethal weapon systems and submunitions can be conducted remotely using a robotic Remote Area Disassembly Vehicle.

In addition to controlled environment testing, the actual operation of the system is tested, which in many cases involves the launching of a rocket or missile. Reliability, availability and maintainability (RAM) information, including MANPRINT factors and safety data, is collected and evaluated during these tests. MT provides knowledgeable reliability engineers and equipment specialists to develop test methodology and to plan customer reliability and maintainability test programs. Test data from the programs are processed in the Developmental Test Command (DTC) Standard Data Collection System and provide test incident reports to assess overall system performance. These performance parameters indicate utility and effectiveness of the system so MT can assure the best systems possible are fielded.

For systems with embedded software, a unique requirement-oriented software assessment methodology targeted at the system performance level can be applied. The approach is focused at the software's requirement level and deliberately avoids further debugging of the contractor's computer code. Simulation techniques are available for evaluation of systems under test.

Mathematical models of systems, subassemblies and major components can be assembled and executed on digital computer systems. The results of simulations can help determine range safety boundaries, preflight and post-flight analysis, environmental effects on system functions and overall system performance in preparation for live firings.

MT has experience in a variety of other technical activities that are test-related. Some examples include supporting the systems engineering process, performing software independent verification and validation, monitoring developer (contractor) testing, assisting in establishing the extent to which simulation could and should be used, assisting in the verification and validation of simulations, and assisting in the identification of data collection and data reduction requirements.

When appropriate, MT coordinates requirements with the Range Operations Directorate to conduct live rocket or missile firings. This coordination determines the launch and

impact site, the use of targets, and the type and accuracy of data required. For more information, visit the WSMR website at www.wsmr.army.mil or call 575-678-1241/1243. Write to: Director, Materiel Test Directorate, White Sands Missile Range, NM 88002-5158.

SURVIVABILITY, VULNERABILITY AND ASSESSMENT DIRECTORATE

The Survivability, Vulnerability and Assessment Directorate (SVAD) offers complete laboratory capabilities for nuclear environments, electromagnetic environments, and applied environment test and evaluation. As part of the laboratory capabilities, the SVAD has complete ionizing radiation simulation environments and testing expertise. The SVAD also provides extensive electromagnetic environment simulation and testing expertise. Finally, the SVAD provides myriad other environments and capabilities ranging from high and low temperatures to salt, fog, rain, shock and vibration, and a chemical laboratory.

Ionizing Radiation Test Capabilities

Major nuclear effects test facilities operated by SV include:

- **White Sands Solar Furnace (WSSF):** The WSSF produces intense thermal pulses or steady-state thermal radiation exposures to simulate the thermal radiation from detonation of a nuclear weapon. At full power, the energy generated by the WSSF can penetrate a half-inch stainless steel plate in 40 seconds.
- **PI-538 Flash X-ray Facility:** The PI-538 is a high-energy, pulsed, field-emission electron beam or Bremsstrahlung X-ray source. It provides an energy source of short duration for determining material responses to rapid and in-depth energy deposition and is a particularly cost-effective means of testing relatively large items. The system is optimized to produce an output that can irradiate substantial volumes at levels exceeding $1.0E10$ cGy(Si) per second over a 50-square-centimeter area.
- **Linear Electron Accelerator (LINAC):** The LINAC is designed to simulate the high-intensity gamma spike associated with a nuclear weapon detonation by producing high-intensity, short-duration pulses of high-energy electron radiation for threat-level exposures.
- **Gamma Radiation Facility (GRF):** The GRF is designed to provide the total gamma dose and residual gamma dose environments needed for nuclear effects testing on virtually any size item. The GRF is used primarily for Transient Radiation Effects on Electronics (TREE) experiments and verification tests of systems



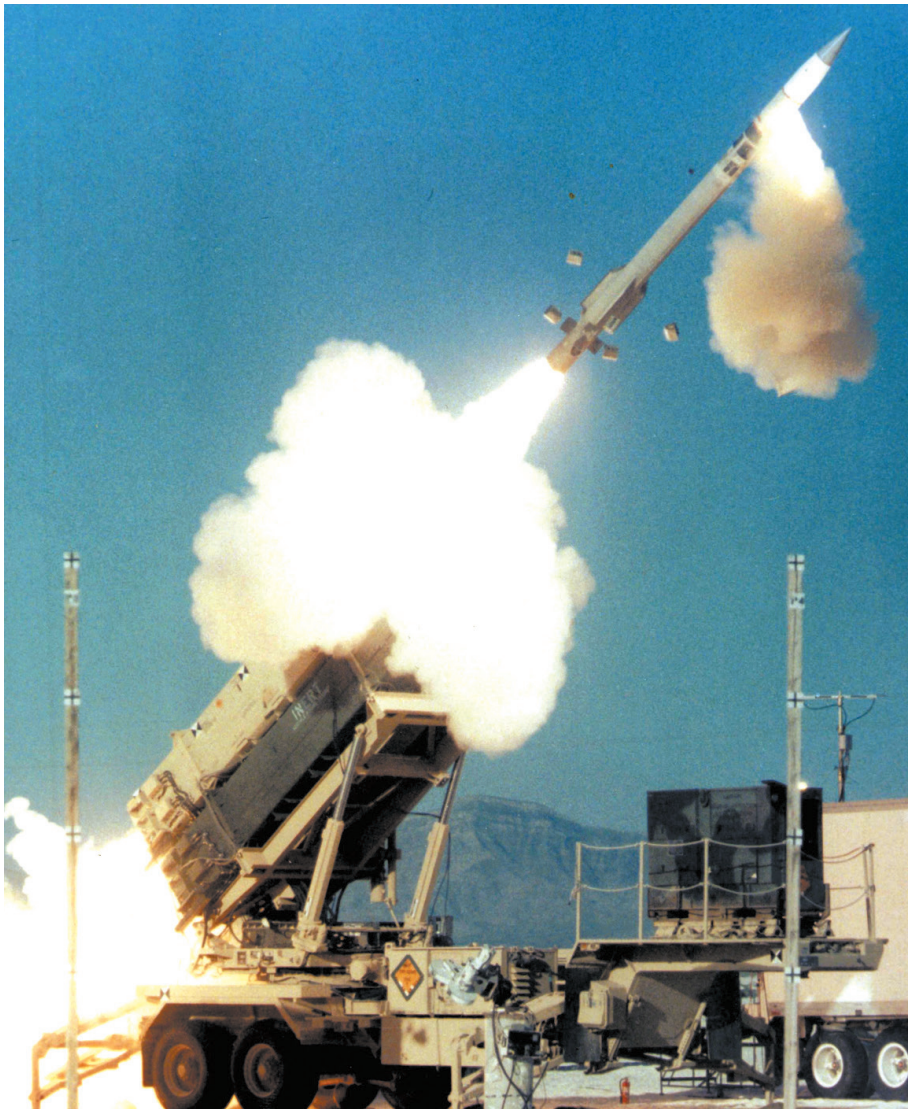
The Aerial Cable Range is a 3-mile-long Kevlar cable strung between two mountain peaks from which targets can be suspended for test purposes.

for gamma dose survivability. However, the uses of the GRF are diverse, including radiography and shielding experiments and nuclear power plant equipment and materials verification, as well as calibration and operational testing of military RADIAC instrumentation.

- **Fast Burst Reactor (FBR):** The FBR is an unmoderated and unreflected cylindrical assembly of uranium and molybdenum alloy. The FBR produces high-yield pulses of microsecond width, as well as long-term, steady-state radiation, to closely simulate the neutron radiation environment produced by a fission weapon. Its principal use has been and continues to be the testing of electronic devices to a fast neutron environment. Additionally, it can be combined with the PI-538 Flash X-ray to provide a synergistic combined test environment.
- **DS-20 Panoramic Irradiator:** The DS-20 Panoramic Irradiator is used for gamma dose simulation testing. The facility is capable of providing dose rates between 50 and 0.01 rad(Si) per second in the direct beam with no attenuation. The Eldorado can also operate in an extended operation mode to fulfill the unique requirements of Space Radiation Environment tests. Utilizing off-axis irradiations or aluminum attenuators, lower dose rates are achieved.

In addition to these ionizing radiation producing facilities, the SV also provides test and support capabilities in conjunction with the nuclear facilities with the Semiconductor

ORGANIZATIONS AND MISSIONS



The Patriot Advance Capability 3 is tested at White Sands Missile Range.

Test Laboratory and the Radiation Tolerance Assured Supply and Support Center.

The Semiconductor Test Laboratory (STL) enables all types of discrete, active and custom semiconductors to be characterized and then tested by exposure to the appropriate initial nuclear radiation (INR) environment. Due to a rapid transfer system between the four INR facilities and STL, detailed post exposure characterization of test samples can be initiated within 2 minutes. More than a dozen experienced engineers have characterized and tested more than 5,000 types of electronic devices during the past 13 years. Parametric characterizations are performed on the following mainframe testers::

Teradyne FLEX	Teradyne MicroFLEX
Teradyne A580	Teradyne J750 (2 ea.)
Teradyne A575	Kalos Memory Tester (3 ea.)

ASL3000-RF	ASL3000 (3 ea.)
Diamond 10	Various bench top equipment

The Radiation Tolerance Assured Supply and Support Center (RTASSC) has both ISO 9001:2008 and DLA Lab Suitability QMS certifications and is a service-oriented supply and support center dedicated to assist military and space system program offices with diminishing manufacturing sources and material shortages, proactive and reactive management and solutions, and radiation tolerance (RT) "cradle-to-grave" life cycle management and solutions. The RTASSC does this through temperature- and humidity-controlled carousel storage units and dry nitrogen storage containers.

Electromagnetic Test Capabilities: The SV operates extensive Electromagnetic (EM) Environmental Effects (E3) test facilities to support

the requirements for test and evaluation of weapons systems while being subjected to electromagnetic environments (EMEs). SVE3 test and evaluation capabilities include:

- Electromagnetic radiation (EMR).
- Electromagnetic compatibility (EMC).
- Electromagnetic interference (EMI).
- Electrostatic discharge (ESD).
- Electromagnetic pulse (EMP).
- EM radiation hazards (fuel, ordnance and personnel).
- High power microwave (HPM).
- Lightning effects (LE).

Pulsed Laser Vulnerability Test System (PLVTS): The PLVTS is the largest pulsed CO2 laser in the United States, designed to support susceptibility and vulnerability testing of EO/IR tactical weapon systems. Fully transportable and self-contained, PLVTS is capable of providing tactical threat environments at virtually any test range in the U.S. or in the world.

High Altitude Electromagnetic Pulse: The Advanced Fast Electromagnetic Pulse Simulator (AFEMPS) is a fast rise time free-field EMP simulator (MIL-STD-2169B), with a 30-by-30-meter test area. The Vertical EMP Facility (VEMPS). The SV also has an RS105 Transverse EM test cell.

Lightning Test Facility (LTF): The LTF is capable of simulating both the direct and indirect lightning strike characteristic required in lightning effect testing. To simulate the direct strike of lightning, there is a high-current bank capable of producing 200,000 amps.

High Energy Laser Systems Test Facility (HELSTF): The High Energy Laser Systems Test Facility (HELSTF), operated by the Survivability Vulnerability and Assessment Directorate (SVAD), is a component of ATEC-WSMR. SVAD's Directed Energy (DE) facilities cover the high power microwave (HPM) and high energy laser (HEL) spectrum. SVAD's experienced workforce at HELSTF, coupled with the extensive land and airspace at White Sands Missile Range, provide a one-of-a-kind capability for a wide variety of laser propagation, lethality, survivability, vulnerability and dynamic engagements for high energy laser test and evaluation. The HELSTF represents an investment of approximately \$800 million, offering a wide array of expertise, instrumentation and unique high energy laser infrastructure to support laser technology programs and weapon system development and testing approved for above-the-horizon high energy laser propagation. HELSTF is transforming its infrastructure to keep pace with changing technologies. Modernization efforts include transforming the infrastructure from chemical-based laser

technology to solid-state technology; fully upgrading mission control systems; and fielding mobile diagnostic suites. These modernization efforts assisted the development and testing of future HEL technologies and maintain HELSTF as the organization of choice for testing HEL weapon systems. Key assets include:

- **Solid State Laser Testbed (SSLTB):**

Leveraging the capability of the tactical high energy laser (THEL), HELSTF has converted components of the THEL to serve as a test bed for solid-state laser systems under development. This is the nation's highest power solid-state laser and will provide for the investigation of high-power laser propagation effects, target lethality and engagements of short-range tactical rockets, artillery and mortars. Future efforts may include the integration of other developmental lasers and systems operating at solid-state wavelengths.

- **Sea Lite Beam Director (SLBD):** A high-precision beam director system built by Hughes Aircraft Co., the Sea Lite Beam Director provides the capability to track highly maneuverable short-range and long-range targets. The optics coated for the infrared and visible allow the beam director to also serve as a high-resolution imaging system to record laser engagement data and missile test data conducted at WSMR.

- **20 kW Solid State Fiber Laser:** HELSTF owns and operates a 20 kW fiber laser welder device as part of a high energy laser capability for solid-state laser testing. The device is housed in a container, with its ancillary equipment, which can be transported to any location to support high energy laser testing.

- **Pulsed Laser Vulnerability Test System (PLVTS):** The PLVTS is the largest pulsed CO₂ laser in the United States, designed to support susceptibility and vulnerability testing of EO/IR tactical weapon systems. Fully transportable and self-contained, PLVTS is capable of providing tactical threat environments at virtually any test range in the U.S. or in the world.

- **Advanced Pointer Tracker (APT):** The APT is a mobile, tactical-size HEL beam director to address critical pointing and tracking issues with a flexible, government-operated, open architecture. Prior significant capital investments provide for survivability tests, risk reduction tests and proof of concept demonstrations. Weapon HEL traceable software such as aim-point designation and maintenance algorithms are tested. Traceable

components are evaluated to determine suitability for combat use (sensors, input and output windows, gyros, fire control, optics and beam path conditioning, etc.). Also low- and high-power survivability testing is conducted against static and dynamic targets in tactical beam propagation environments. Broadband optical coatings provide a multi-wavelength illumination and imaging capability.

- **Target Reflected Energy Measurement (TREM) System:** The TREM measures in-band laser radiation reflected from a ground target (static or spinning target). This capability was developed by the Directed Energy Test and Evaluation Capability (DETEC) program to address HEL T&E instrumentation shortfalls.

- **Ground Target Irradiance Measurement (GTIM) System:** The GTIM measures at the target the irradiance distribution of an incident continuous wave (CW) laser beam in the near-infrared (NIR) portion of the spectrum. This shortfall represented the need for a capability to provide time-dependent spatial distributions of CW laser irradiance in the NIR. The GTIM capability was developed by the DETEC program.

- **HEL Hazardous Test Area (HTA):** Located 900 meters downrange from the laser test cells, the HTA is used for large targets or targets with significant amounts of high explosive. The site is fully instrumented and has remotely controlled diagnostic equipment.

- **Optical Maintenance Facility (OMF):** The OMF provides an on-site, large, clean-room

capability to clean, characterize (wave-front/damage threshold) and install optics of virtually any type.

- **Large Vacuum Chamber (LVC):** The LVC is a 50-foot-diameter sphere and system capable of producing a vacuum equivalent to a 650,000-foot altitude. It is the only large vacuum chamber in the country where weapon-class HEL beams can be propagated in the chamber through an 800-foot evacuated beam tube. Also, weapon system altitude qualification tests can be conducted. There is a removable, sectioned internal track platform inside the chamber that is designed to support very large and heavy test articles. One 30-ton and three 3-ton externally mounted hoists are provided at the top of the LVC for target handling. Numerous "hard" points within the LVC allow for positioning of the test article in virtually any configuration. A remotely controlled retargeting mirror allows engagement of targets within the LVC.

Applied Environments Test Capabilities:

The SV also has numerous applied environment test laboratories to determine if systems can effectively operate in diverse real-world conditions. SV can subject an entire system to extreme low- and high-temperature environments in climatic test facilities. Temperature tests can be run on complete systems or individual components. The capability also exists to expose both the system and its components to rigorous dust, wind, fungus and other phenomenon. Shock and vibration facilities that



Documenting missile flights requires a fleet of specialized cameras and optical instruments.

ORGANIZATIONS AND MISSIONS

duplicate typical life cycle environments are also available.

Temperature Test Facility

- Hazardous Large Chamber (105 feet long by 40 feet wide by 50 feet high).
- Small Chamber (35 feet long by 30 feet wide by 20 feet high).
- Multipurpose Chamber (70 feet by 24 feet by 21 feet).
- Salt Fog and Humidity Chamber (20 feet long by 15 feet wide by 10 feet high).

Environmental Test Area II (ETA-II)

- Humidity and Salt Fog (5 to 100 percent).
- Rain (0.5 to 27 inches per hour).
- Full Spectrum Solar (360 Btu per hour per square foot).
- Sand and Dust Chamber.
- Outdoor Blowing Sand Facility.
- Outdoor Rain Facility.

Shock and Vibration

- Vibration – logistic and tactical transportation environments.
- Shock – rough handling, drop, multiple waveforms, pendulum impact, acceleration.
- Loose cargo vibration.
- Rail impact.
- Acceleration.

Microbiological/Chemical/ Metallurgical Laboratory

- ORLAB-certified.
- Project support (centralized and field work).
- Missile exhaust gas analysis.
- Explosives analysis.

- Failure analysis.
- Identification of unknown samples.
- Hazardous waste characterization.
- PCB analysis.
- Air and water quality measurements.
- Spill characterizations.
- Fungus testing.

Nondestructive Evaluation (NDE) of Material

- Failure and material analysis on metallic, nonmetallic and advanced engineering materials.

X-Ray Inspection

- Scanning electron microscope (SEM).
- Energy dispersive X-ray (EDX) analyzer.
- Lietz optical metallograph.
- Wilson digital hardness tester.
- Wilson microhardness tester with digital interface.

For more information, call:
575-678-1161/5584/0655/5699/5070.

INFORMATION MANAGEMENT DIRECTORATE

The Information Management Directorate (WSI) manages and operates WSMR information and communication resources for the successful accomplishment of the WSMR Test Mission. It is the single point of contact for information technology (IT) services in support of the WSMR test mission and all its customers to include DOD, foreign, space and industry customers. The directorate manages IT infrastructure and architecture as well as develops long-range strategic plans for WSTC information and communication resources at WSMR consistent with forecasted test mission

requirements. Our organizational mission is to be the provider of choice for the full spectrum of Information and Communications Technology and Information Management Services, including Distributed Networks, Data Management, Frequency Spectrum Management, and Secure Communications, in support of the WSMR workforce and Test Mission. The directorate consists of the Office of Director, Projects Office, Network Services Division and Mission Services Division.

The Cyber Security Management Office (WS-G6-C) provides installation-level information assurance (IA) services and security engineering support to ensure confidentiality, integrity and availability of mission-critical networks, systems and data. It implements the Army IA Program and provides all services as defined by NETCOM C4IM Service 18. Services available include training and certification, policy and planning, vulnerability management, compliance auditing, DIACAP and certification and accreditation support, and Communications Security (COMSEC). This office also operates a computer forensics laboratory capable of providing evidentiary-quality analysis of computer-based communications for the protection of government computer systems and networks. This office supports White Sands Test Center (WSTC) IA services for all customers and tenants utilizing the test networks.

The Distributed Systems Division (WS-G6-D) directs the development and support of intra- and inter-networks for local and distributed test and training for WSMR in support of WSTC, WSMR and WSMR partners to include operations with ATEC partner sites and other commands. It provides and promotes standardization of network processes to align with CIO/G6, ATEC, DCSIM, industry, standard architectures, COTS products and to leverage Test Control M&S tools developed within ATEC as well as provide engineering support with other WS-G6 divisions. This division consists of the Network Operations Branch, the Radio Spectrum Branch and the Transmission Branch.

The Projects Office (WSI-P) is the customer service “front door” for the Information Management Directorate. The Projects Office provides test mission planning, project management and customer fulfillment services for all directorate operations and services. Customer requirements are gathered and analyzed, cost estimates are generated and negotiated, and directorate support providers are coordinated, all according to sound project management processes to ensure mission success. As program managers, they are the directorate’s single point of contact for committing resources in support



A Patriot Advanced Capability 3 launcher undergoes cold testing in a White Sands Missile Range climatic chamber.

of on- and off-range mission testing as well as non-test mission telecommunication customer requirements.

The Mission Services Division (WSI-M) directs the operations and support of intra- and inter-range networks and audiovisual services for local and distributed test and training missions in support of WSMR customers. It promotes standardization of network processes to align with CIO/G6, ATEC, industry, standard architectures, COTS products and to leverage Test Control Modeling and Simulation tools developed within ATEC as well as provide engineering support with other WSI divisions. This division consists of the Electronics Documentation Branch, the Field Operations Branch and the Network Operations Branch.

The Electronic Documentation Branch (WSI-ME) performs management oversight of audiovisual support services for test mission and general support requirements. These services include still digital media for documentation, high-definition digital and analog video for documentation and production, digital and high-definition online editing, media reproduction, graphic arts, photo printing and imaging. This branch provides official DA photo and passport photo services and maintains an extensive photo and video archive that documents the history of White Sands Missile Range and its role in defending our nation.

The Field Operations Branch (WSI-MF) provides critical support to all WSMR missions. The support encompasses the entire WSMR complex and requires real-time management of transport systems and networks between information management facilities and customer locations. Personnel in this section set up all telephone, intercom, and special data and video circuits, UHF and VHF radios, ground-to-air radio links and microwave links prior to missions and ensure that all mission requirements are met. Personnel work the communications technical control facilities and operate the various mobile telecommunications units, including command control flight termination system (CC/FTS) mobiles and mobile technical control communications units. The branch is composed of the North Range Section at Stallion Range Center, the Central Range Section at Holloman Air Force Base and the South Range Section near main post.

The Network Operations Branch (WSI-MN) is composed of the Network Operations Center (NOC) and the Inter-Range Control Center (IRCC). The NOC provides daily mission support through monitoring, controlling and maintaining the telecommunications network transport system and monitoring commercial power, circuit alarms and transport-related



Army Air UH-60 Blackhawk in the hangar at Holloman Air Force Base. Army Air provides aviation services, including transport, recovery and aerial test support to range customers.

alarms. The NOC controls circuit and bandwidth allocations for the telecommunications network and maintains the telecommunications transport system by providing technical and software support. The IRCC provides local and distributed test mission support by conducting engineering, design, planning and coordination activities to establish requirements and provide solutions for distributed test conduct, distributed networks, test data collection, display and distributed asset integration. It manages distributed tests by controlling and monitoring distributed networks, monitoring test data for quality, providing necessary displays and test applications for test participants, and providing overall event management and go and no-go decision-making.

The Network Operations Branch (WS-G6-DN) provides local and distributed test mission support.

The Inter-Range Operations Section (WS-G6-DNI) conducts engineering, design, planning and coordination activities to establish requirements and provide solutions for distributed test conduct, distributed networks, test data collection, display and distributed asset integration. It manages distributed tests during the event by controlling and monitoring distributed networks, monitoring test data for quality, providing necessary displays and test applications for test participants, and providing overall event management and go and no-go decision-making. Additionally, it manages a NIE-test facility by maintaining configuration management of hardware, software and facilities in support of network integration test activities.

The Network Operations Section (WS-G6-DNN) provides daily mission support through monitoring, controlling and maintaining the telecommunications network transport

system and monitoring commercial power, circuit alarms and transport-related alarms. WS-G6-DNN controls circuit and bandwidth allocations for the telecommunications network and maintains the telecommunications transport system by providing technical and software support.

The Radio Spectrum Branch (WS-G6-DR) provides day-to-day engineering support for the various radio frequency systems, to include command and control and flight termination systems, read-back receiver systems, ground-to-air radio systems, land-mobile trunk radio systems and frequency surveillance systems. It also provides engineering layouts, diagrams, schematics and configurations for the radio frequency systems as well as coordinates with range flight safety personnel to provide the necessary interfaces and feedback systems to satisfy range safety requirements.

The Installation Spectrum Management Office (ISMO) is responsible for managing frequency allocation and authorization for all Radio Frequency (RF) spectrum users at White Sands Missile Range (WSMR); which includes all WSMR controlled real estate and test sites.

The Installation Spectrum Management Office adheres to the Army spectrum management functional processes necessary to implement the National Telecommunication and Information Administration (NTIA) Manual of Regulations and Procedures for Federal Radio Frequency Management and the provisions of Dept. of Defense Directive (DoDD) 4650.1. Per Army Regulation 5-12, all RF spectrum dependent equipment used by individuals, units, and organizations on a U.S. Army Installation will obtain spectrum certification prior to equipment use and must have the authorization of the ISMO to operate said equipment prior to

ORGANIZATIONS AND MISSIONS



A Joint Air-to-Surface Stand-off Missile test is conducted at White Sands Missile Range.

use, whether the system is FCC licensed or not (Part 15/Annex K of the NTIA Manual).

Our services include, but are not limited to: frequency authorizations, spectrum coordination, frequency de-confliction, and RF interference reporting. Our goal is to provide efficient and effective planning, coordination, and management of available spectrum resources to allow our customers to operate in a safe and interference free environment.

For information, please contact the Installation Spectrum Management Office (ISMO) at 575-678-1193, DSN 258, or email usarmy.wsmr.atec.list.ism@mail.mil.

The Transmission Branch (WS-G6-DT) provides day-to-day engineering support of the rangewide telecommunications transport network system. It provides systems engineering for the outside plant cable infrastructure to include copper and fiber optic cables and the expansion and migration of the existing fiber optic transport network to the latest technologies, including wireless networking, offering state-of-the-art capabilities and functionality as dictated by Army and DOD policies. It provides engineering layouts, diagrams, schematics and drafting services to division-, branch- and section-level personnel and provides configuration control databases with inputs and updates for network and circuit record documentation for areas throughout the range. This branch consists of the Transmission Engineering, Installation and Field Operations sections.

The Transmission Engineering Section (WS-G6-DTE) provides systems engineering for the outside plant cable infrastructure to include copper and fiber optic cables. It provides systems engineering for the expansion and migration of the existing fiber optic transport network to the latest technologies, to include wireless network extensions, offering state-of-the-art capabilities and functionality dictated by DOD and Army policies. It provides engineering layouts, diagrams, schematics and drafting services to division-, branch- and section-level personnel. It provides configuration control databases with inputs and updates for network and circuit record documentation for areas throughout the range.

The Installation Section (WS-G6-DTI) provides installation, repair, relocation, modification and fabrication support of communications equipment. It provides inside cable installation, maintenance of special purpose communications systems and installation, maintenance and repair of cable plant systems for all of WSMR. Additionally, this section installs and brings to service total communications systems (i.e., microwave and fiber optic local area network and transmission systems).

The Field Operations Section (WS-G6-DTF) provides critical support to all WSMR missions. The support encompasses the entire WSMR complex and requires real-time management of transport systems and networks between information management facilities and customer locations. Personnel in

this section set up all telephone, intercom, and special data and video circuits, UHF and VHF radios, ground-to-air radio links and microwave links prior to missions and ensure that all mission requirements are met. Personnel work the communications technical control facilities and operate the various mobile telecommunications units, including frequency surveillance mobiles, command control flight termination system (CC/FTS) mobiles and mobile technical control communications units.

The Enterprise Services Division (WS-G6-E) supports both mission and standard Army Signal communications. This division, in conjunction with the U.S. Army 106th Signal Brigade, provides Command, Control, Communications, Computers and Information Management (C4IM) services as a NETCOM Network Enterprise Center (NEC). This division also provides myriad real-time telecommunications support to all on-range, off-range and various outside-the-continental United States (OCONUS) missions. Off-range mission support is provided at: Fort Wingate, New Mexico; Cordova, Alaska; Yuma, Arizona; Washington state; Colorado Springs, Colorado; and other locations. The Enterprise Services Division consists of the Communications Branch, the Electronic Documentation Branch, the Information Assurance Branch, the Plans Branch, and the Systems and Networks Branch.

The Communications Branch (WS-G6-EC) provides communications systems and support as identified by NETCOM C4IM Service 15. The White Sands Missile Range telephone system operates as a private telephone network. The main telephone switch interconnects with 11 remote telephone switches throughout the installation. To connect to the outside world, WSMR leases local trunk lines, which connect into public telephone network switches in Las Cruces, Alamogordo and Albuquerque, New Mexico; and Fort Bliss, El Paso and Socorro, Texas. WSMR also has long-haul trunk lines that tie into the Federal Telephone System (FTS) and Defense System Network (DSN).

The Telephone Services Section (WS-G6-ECT) manages telephone services, telecommunications support contracts and leased communications services (cellphones, Blackberries, commercial voice and data circuits, etc.). This section manages the operation of the Inside-Plant (Telephone Dial Central Office/Tech Control) facility, telephone installation and repair within the cantonment area, and automated 24-hour operator services. A switched, Voice over Internet Protocol (VOIP)-capable telephone system connects WSMR personnel with the worldwide commercial telephone network and various military and government networks. This section also operates

and maintains state-of-the-art audio and video conferencing capabilities for both unclassified and classified conferencing.

The Electronic Services Section (WS-G6-ECC) provides electronic support services for hand-held radio and emergency equipment. This section provides design, engineering, installation, removal and maintenance of all Intrusion Detection Systems (IDS), Fire Detection Systems (FDS) and Access Control used throughout the range. Major areas of responsibility are the Fast Burst Reactor. This section also provides all presentation support for all WSMR requirements and provides customized fabrication, sheet metal and welding support for Team WSMR.

The Electronic Documentation Branch (WS-G6-EE) performs management oversight of audiovisual support services for test mission and general support requirements. These services include still digital media for documentation, high-definition digital and analog video for documentation and production, digital and high-definition online editing, media reproduction, graphic arts, photo printing and imaging. This branch provides official DA photo and passport photo services and maintains an extensive photo and video archive that documents the history of White Sands Missile Range and its role in defending our nation.

Plans Branch (WS-G6-EP) is the customer service "front door" for the Information Management Directorate. The Plans Branch provides mission planning, project management and customer fulfillment services for all directorate operations and services. Customer requirements are gathered and analyzed, cost estimates are generated and negotiated, and WS-G6 support providers are coordinated, all according to sound project management processes to ensure mission success. As program managers, branch personnel commit directorate resources in support of on- and off-range mission testing as well as nonmission telecommunication customer requirements. They provide program management and act as the IM single-point-of-contact for safari testing worldwide. The Plans Branch owns the WS-G6 service catalog.

The Systems and Networks Branch (WS-G6-ES) maintains overall responsibilities for designing, operating and managing digital networks, systems, applications and support services. The branch supports both standard automation services as defined by NETCOM C4IM Service 19, as well as mission support utilizing the most dynamic and expansive network infrastructure in the nation. This branch operates five major campus networks: unclassified Internet protocol routing (NIPR), Secret Internet Protocol Routing (SIPR), White Sands

Missile Range campus network (WSMRnet), and both unclassified and classified Test Support Networks (TSN). This branch operates the WSMR Data Center to provide data storage, server computing capacity and standard network services such as web, database and portal. This branch also oversees the WSMR Computer Service Desk.

For more information about the Information Management Directorate, write: Director, Information Management Directorate, White Sands Missile Range, NM 88002.

SYSTEMS ENGINEERING DIRECTORATE

The Systems Engineering Directorate (SE) is the principal developer and provider of technology and instrumentation for White Sands Test Center and its customers. SE conducts planning, concept formulation, research and development, systems engineering, systems development, systems integration, field testing, life cycle support and systems acquisition to ensure adequate test resources are available in a timely fashion to enable successful test and evaluation of current and future weapons programs. SE also manages the WSTC overall investment and modernization process.

The directorate is largely composed of engineers and scientists and is heavily augmented by contractors. SE personnel work closely with operations elements of WSMR and with range customers to identify test technology needs and to develop corresponding solutions. Developed instrumentation supports a broad base of capabilities and includes but is not limited to: radar, telemetry, imaging, graphical displays, optics, tracking, directed energy, data processing, data storage, data transmission and networks, control systems, target control (both air and ground targets), interoperability

test environments, directed energy, electromagnetic effects, counter improvised explosive device testing, physical environments, etc. The span of development ranges from applied research on new and advanced sensors to subsystem-level development of range instrumentation to full systems development and integration of complex range test systems supporting intercontinental weapons testing. SE primarily supports the investment and capability needs of WSTC; however, the directorate provides support to external customers on a case-by-case basis. National labs, private industry and other test ranges augment the SE development resources.

SE is structured with an Investment Planning Office and four technical divisions. In close coordination with all WSTC elements, the Investment Planning Office has oversight and monitoring responsibility for all WSTC technology investments and ensures that all requirements are accurately documented in the Technology Development and Acquisition Program (TDAP) database and ensures adherence to all applicable regulations and policies.

Each SE division performs the same systems engineering functions of development, integration, testing and field transition but focuses its efforts on supporting specific technology areas within WSTC. The Range Integration Division provides engineering services in the areas of GPS, optics, telemetry, radar and meteorological systems. The Sensor Systems Division primarily focuses on capabilities in the areas of directed energy, physical environments, simulated and stimulated environments, electromagnetic imaging systems and counter improvised explosive devices (IED). The Networks and Control Systems Division is responsible for the technology areas to include



PHOTO BY DREW HAMILTON

Joint Terminal Attack Controller from the 82nd Airborne Division cross the gypsum flats of White Sands Missile Range. WSMR's diverse terrain set allows testing in different environments without ever having to leave the range.

ORGANIZATIONS AND MISSIONS

network architecture, wireless architectures, air and ground target control systems, unmanned autonomous testing and data display systems. The Scientific Software Systems Division provides mathematical and statistical services and software development to range customers and mission support organizations including flight safety, range control and the Inter Range Control Center. This division also has expertise in mathematical modeling and modeling and simulation applications as well as real-time data processing software algorithms.

DIRECTORATE OF RESOURCE MANAGEMENT (MISSION/TEST CENTER)

The Directorate of Resource Management (575-678-4345 or DSN 258-4345) provides financial resource management, budget, financial planning, managerial accounting, policy, compliance and management analysis support for WSMR. It serves as the interface between Headquarters Army Test and Evaluation (HQATEC) and White Sands Missile Range organizations for those functions. This directorate also exercises staff and technical supervision for resource management, which includes both financial and manpower activities, budgeting, managerial accounting, management analysis and contract analysis. The director serves as the chief financial officer and the principal financial adviser to the commanding general and the executive director.

The Budget Division (575-678-2207 or DSN 258-2207) performs the full scope of program planning, budgeting, test resource management analysis and justification functions required to acquire financial resources needed by WSMR to perform its current and future mission. It provided technical leadership in development of consolidated WSMR budgets for research development test and evaluation (RDT&E) direct test support and other miscellaneous program element and appropriations budgets. It ensures budget submissions comply with prescribed budget methods, practices, procedures, regulations, precedents and policies. It provides budget development and execution support to the White Sands Test Center (WSTC) commander, executive director and other staff offices. It provides budget and resource management services to the WSTC and other subordinate organizational elements of the WSTC.

- **Reimbursable Focus:** In support of test officers and mission requirements, the Budget Division receives MIPRS and funds from Army, Navy, Air Force, Foreign Military Sales, other government agencies, and private and commercial entities for testing at WSMR. The team provides inception to retirement support of reimbursable customer funding documents;

deals with reviewing, validating and processing all funding documents for incoming orders for all customers; and reviews and analyzes all transactions in accounting systems to determine if any overage funding balances can be returned back to customers for prior and current year accounts.

- **Program and Operations Focus:** The Budget Division deals with the execution of the full spectrum of the Planning, Programming, Budgeting and Execution System (PPBES) and provides management analysis and justification functions necessary to acquire all of the resources needed by White Sands Missile Range to perform its current and future mission. It provides expert guidance in the development of the consolidated WSMR budgets for RDT&E test support and other miscellaneous program element and appropriations budgets. It ensures budget submissions comply with the appropriate budgetary methods, practices and procedures and complies with all legal and regulatory guidance and policies. It provides budget development and execution support to the WSMR command group, WSTC and other subordinate organizational elements of the WSTC. It reviews, analyzes and recommends approval, disapproval and modification of budget requests. It develops, analyzes and maintains statistics for efficiency indicators, goals and capability profiles to ensure WSMR meets Headquarters Department of Army (HQDA) and HQATEC financial goals. It provides technical assistance on overall installation policy and procedures. It prepares presentations for the CG on financial issues for use at higher HQ meetings. It provides advice to the command group and other WSMR leadership elements on all matters regarding budgetary and financial strategies for test resource proposals. Successful and smooth management of DOD resources requires collaboration across all financial elements on WSMR and its neighboring government agencies.

The Management and Accounting Division (575-678-6029 or DSN 258-6029) performs the full range of support activities for major contracts and accounting functions in support of mission activities within the range. The division is responsible for issues related to concept plans, support agreements, the internal control program, contract oversight, reimbursable civilian and contractor direct labor hour oversight, and overall planning and support of accounting operations and

related systems. This division administers and oversees various management and accounting programs and systems to ensure all are in compliance with applicable policies and regulations. The two areas of focus under the division include the following:

- **Management of Contracts and Agreements:** The Management and Accounting Division deals with the monitoring of requests for service contract approval; the contract manpower requirements activity; program analysis for the three large contracts, which are monitored by mission, along with some smaller mission contracts; cradle-to-grave execution and conclusion of the support agreements program; and the manager's internal control program for the mission and WSTC by monitoring the statement of budgetary resources and key control objectives. The branch also provides monthly analysis of institutional and reimbursable contractor direct labor hours, oversees the cost tracking program, ensures all capabilities of the test center are captured correctly and provides critical information related to yearly equivalents for institutional and reimbursable contractor work. Administering to and managing all WSMR agreements is an additional opportunity to collaborate across WSMR and its neighboring communities, organizations and agencies.
- **Accounting:** The increased need to be accountable and auditable across the DOD has increased the roles and responsibilities of accountants in the various services. The Management and Accounting Division provides accounting policy guidance and overall accounting systems and operations support to WSMR mission organizations. This branch overseas and is responsible for the Government Travel Card Program, the Joint Reconciliation Program, debt management, time-keeping, general accounting research and oversight of interfacing data files from other systems. Financial systems managed and overseen within the branch include the Automated Time Attendance and Production System, the Defense Travel System, the Wide Area Workflow, the Standard Operations Maintenance and Research Development System (SOMARDS), the SOMARDS Financial Information Management System and the General Fund Enterprise Business System.

OTHER TEAM WHITE SANDS ORGANIZATIONS

3RD BATTALION, 6TH AIR DEFENSE ARTILLERY, AIR AND MISSILE DEFENSE PATRIOT

On Oct. 1, 2014, Training and Doctrine Command (TRADOC) established the 3rd Battalion, 6th Air Defense Artillery, Air and Missile Defense (AMD) Patriot Test Detachment for the Fires Center of Excellence at Fort Sill, Oklahoma, with duty at White Sands Missile Range, New Mexico. The mission of the test detachment is to provide expertise and knowledge in support of AMD programs and to conduct developmental tests; flight tests; and tactics, techniques and procedures development in preparation for Directorate of Testing and Evaluation (DOT&E) and Army Test and Army Evaluation Command (ATEC) operational tests.

DESERT MOUNTAIN CIVILIAN PERSONNEL ADVISORY CENTER (CPAC)

The Desert Mountain Civilian Personnel Advisory Center (CPAC) is headquartered in Building 124.

Personnel advisers are part of the WSMR management team and provide assistance to the command group, managers, supervisors and employees on all human resources issues. Such areas include, but are not limited to: labor-management negotiations, management-employee relations, employee benefits, recruitment strategies, position management and classification, local training and nonappropriated fund (NAF) employment.

Recruitment efforts to fill WSMR positions are also the responsibility of the CPAC.

Employment information on positions at WSMR and other Army installations is available online at the Army's Civilian Human Resources Agency (CHRA) website, www.acpol.army.mil, or by viewing the Office of Personnel Management website at www.usajobs.gov. For specific nonappropriated fund employment information on WSMR, contact the NAF Human Resources Office at 575-678-2930.

MISSION AND INSTALLATION CONTRACTING COMMAND (MICC)-WHITE SANDS

MICC-White Sands manages, directs and executes the installation contracting program for the acquisition of supplies, equipment, materials and services required for test mission support and the operation and maintenance of the installation and its tenant organizations. They are a professional contracting team totally committed to utilizing the best practices to support the readiness, infrastructure and well-being of Soldiers and family members. MICC-White Sands is strategically resourced to manage contracts and ensure delivery of

quality goods and services in a timely manner and at a reasonable cost for customers. All contractors wishing to do business with the DOD must register in the System for Award Management (SAM) system by going to the website www.sam.gov/portal/public/SAM. For more information, call 575-678-1215 or visit www.wsmr.army.mil/contracting.

UNITED STATES AIR FORCE

The 704th Test Group (TG) mission is to operate world-class test facilities for guidance and navigation system testing, high-speed sled track testing, radar signature measurements, aircraft survivability testing, landing gear testing and weapons system flight testing, as well as test and evaluation liaison for U.S. Air Force Research and Development programs working with directed energy. The 704 TG commander also serves as White Sands Missile Range Deputy for Air Force and is responsible for all Air Force test events at WSMR.

586TH FLIGHT TEST SQUADRON (586 FLTS)

The 586 FLTS plans, analyzes, coordinates and conducts flight tests of advanced weapons and avionics systems, primarily on WSMR. In addition, the unit provides deployable operational support for test aircraft staging out of Holloman Air Force Base. The squadron provides a variety of services ranging from aircraft bed down to facilities providing a high level of security to its customers.

The 586 FLTS operates four highly modified T-38C aircraft equipped to support a wide variety of flight test operations. Capabilities include: sub-meter accurate time, space, position, information (TSPI) system, chaff, flare,

RADAR altimeter, digital radio frequency memory (DRFM) electronic attack (EA), pylon-mounted sensor, weapon or towed target carriage and multiple format photographic coverage.

The squadron also operates a highly modified C-12J (Beech 1900) with multiple external antennae and internal pallet configurations for guidance and navigation, avionics and electronics testing. It is also equipped with an external pylon for sensor and weapon captive carriage with corresponding internal real-time operator interface. Additionally, the squadron operates a modified C-12F (Beech 200), which is configurable to a customer's specific test requirements.

DETACHMENT 1 (DET. 1), 586TH FLIGHT TEST SQUADRON

Det. 1 is located on WSMR main post. Det. 1 is the executive agent for the 704 TG commander's Deputy for Air Force role and conducts the daily duties of that office on WSMR. As such, Det. 1 conducts pretest planning, schedules range resources, manages project finances, and coordinates with WSMR organizations on inter-service issues and process improvements. For more information about Air Force missions on WSMR, call 575-678-1251 or write to: Deputy for Air Force, 586 FLTS Det. 1, Building 1504, Headquarters Avenue, White Sands Missile Range, NM 88002.

746TH TEST SQUADRON (746 TS)

The 746 TS, also known as the Central Inertial & GPS Test Facility (CIGTF), has been the DOD's leader in guidance and navigation system testing for more than 50 years. While CIGTF's mission began with inertial guidance



A Canadian serviceman uses WSMR's air traffic controls during an international exercise that included WSMR's restricted airspace.

ORGANIZATIONS AND MISSIONS



An aerial view of the solar furnace in operation. The heliostat can be seen directing sunlight through a shutter used to turn the furnace on and off.

and navigation testing, the unit has since expanded its expertise to include GPS due to its success as a navigation aid. Today, CIGTF is the established leader in inertial, GPS, and blended GPS-inertial component and system testing. The 746 TS leads the multiservice GPS Test Center of Expertise (COE) comprised of Army, Navy and Air Force test agencies chartered to support DOD GPS test and evaluation.

CIGTF's inclusive lab, field and flight-testing capabilities offer the customer a cost-effective means to evaluate their guidance and navigation systems in a variety of environments. CIGTF's inertial laboratories offer a unique collection of precision centrifuge and rate table resources, capable of accurately testing and evaluating inertial navigation components, subsystems and systems. The Navigation Test and Evaluation Laboratory (NavTEL) is a state-of-the-art simulation facility used for testing stand-alone GPS user equipment and integrated GPS navigation systems. Following functional and performance verification in NavTEL, CIGTF can conduct ground and flight tests in diverse locations (that include the adjacent range at WSMR) and under varying degrees of GPS-challenged scenarios that are tailorable to specific customer requirements. To accomplish accurate flight and field testing, CIGTF provides the world's most precise TSPI Truth Reference Systems, accurate even in GPS-denied environments. If required, CIGTF can leverage its Static Antenna Test Range to conduct multi-element GPS antenna testing using multiple jammers in a controlled, open-air environment. This additional cost-effective, repeatable environment can be useful before embarking on operationally

realistic Navigation Warfare (NAVWAR) flight or field testing.

846TH TEST SQUADRON (846 TS)

The 846 TS operates the world's premier rocket sled test track. The Holloman High Speed Test Track (HHSTT) is an aerospace ground test facility that conducted its first sled test in 1950. Its function is to simulate dynamic events and selected portions of flight trajectories under accurately programmed, closely controlled and rigorously monitored conditions. These rails span a total linear distance of 50,971 feet. They are continuously welded and aligned to rigid tolerances with respect to straightness and surface smoothness.

The HHSTT provides a critical link between laboratory-type investigations and full-scale flight tests. The test track provides an efficient, safe and cost-effective ground test alternative to expensive developmental flight tests. Complementing the test track itself, the overall HHSTT complex encompasses ancillary facilities for artificial rain simulation, an accurately surveyed ejection test area, captive and free-flight blast test sites, impact test sites and a horizontal rocket test stand. Support facilities include buildings for electronic and photo-optical instrumentation, a telemetry ground station, engineering facilities, and shop facilities for design and fabrication for test sleds. The squadron is the DOD's "Center of Expertise" for all ejection seat testing and the lead facility for all supersonic tracks.

AIRSPACE SURVEILLANCE

The White Sands Radar Facility is staffed by a detachment of personnel from the Air

Force's Air Combat Command, 49th Wing, 49th Operations Support Squadron at Holloman Air Force Base, New Mexico. The radar facility, also known as "Cherokee," monitors all air traffic in the skies over WSMR 24/7. Its work entails managing the airspace above the range, in conjunction with WSMR Range Control, to support customers and aircraft in support of tests and maintaining air safety surveillance of the restricted airspace. Additionally, members of the 49th OSS provide air traffic control services to the 49th Wing, 56th Fighter Wing and the Alamogordo-White Sands Regional Airport.

GEODSS

The 14th Air Force Joint Space Operations Center (JSPOC), at Vandenberg Air Force Base, California, is responsible for maintaining the world's most accurate catalog of positional data on all man-made, Earth-orbiting objects. Ground-based Electro-Optical Deep Space Surveillance (GEODSS) sites, assigned to the 21st Space Wing, Air Force Space Command, play a vital role in tracking "deep space" objects. Some 2,700 objects, including geostationary communications satellites, are in deep space 3,000 miles and beyond.

The GEODSS detachments are three of 24 worldwide sensors in the Space Surveillance Network (SSN) that provide observational data to JSPOC. The three operational GEODSS sites reporting directly to the 21st Operations Group are: Detachment 1 at Stallion Range Center near WSMR's northern boundary; Detachment 2 at Diego Garcia, British Indian Ocean Territories; and Detachment 3 at Maui, Hawaii. To perform its mission, GEODSS employs three low-light level electro-optical telescopes, high-resolution monitors and four computers. The system only operates at night when the telescopes can detect objects 160,000 times dimmer than the human eye can detect. The telescopes have 40-inch apertures and a 1.68 degree field of view.

The GEODSS system, which can track objects as small as a basketball more than 20,000 miles out in space, is a vital part of the U.S. Strategic Command's space control mission and provides nearly 70 percent of the entire SSN's throughput of deep space observations. The GEODSS concept was researched and developed by the Massachusetts Institute of Technology Lincoln Laboratories at the Experimental Test Site near Detachment 1 at Stallion. The site is still in use by MIT for research and development. For more information, call 575-835-4546 or 575-679-4134. Write to: Det. 1, 21 OG/CC, P.O. Box W, Socorro, NM 87801.

NAVY

The Navy has been part of the WSMR test community since June 14, 1946, when naval activity was established to participate in research and testing of captured German V-2 rockets. Today, the mission of the Naval Surface Warfare Center, Port Hueneme Division, White Sands Detachment includes land-based live fire testing of naval weapon systems, missiles, guided munitions and lasers, missile and rocket assembly, research rocket launch operations and assemblies, and launch of ballistic missile target vehicles.

Navy facilities include the LLS-1 Desert Ship, Missile Assembly Facility, south and north range rocket launch sites, south and midrange gun sites, and other test sites.

ARMY RESEARCH LABORATORY

The Army Research Laboratory (ARL) is the Army's primary source of fundamental and applied research. With more than 1,250 scientists and engineers, ARL is a key in-house repository of expertise in support of Army unique requirements. The laboratory's mission is to provide key technologies and analytical support to ensure the Army has decisive victory in future land warfare. Elements of two ARL organizations are located on White Sands Missile Range: the Cybersecurity &

Electromagnetic Protection Division (CEPD) of the Survivability/Lethality Analysis Directorate (SLAD) and the Computational and Information Sciences Directorate (CISD) Battlefield Environment (BE) Division.

CEPD's mission is to determine the Survivability, Lethality and Vulnerability (SLV) of all U.S. Army missile defense systems, aviation systems and munitions demonstrations to the full spectrum of battlefield threats and atmospheric interactions throughout the system's life cycle. CEPD is the Army's lead organization for determining electronic warfare (EW) vulnerability and cyber operations vulnerability and survivability of U.S. Army systems and provides technical support to other DOD activities. CEPD provides SLV and evaluation support to developers, decision-makers and the Army evaluator and provides technical judgments on complex SLV issues. CEPD researches, investigates and recommends counter-countermeasures for U.S. Army systems to reduce their susceptibilities and vulnerabilities and to ensure optimum survivability and lethality in threat environments.

Since 1952, CEPD and its predecessor organizations have carried out missions on WSMR. Recent technological advances in cyber operations, electro-optics and directed energy provide new arenas for study, complementing work in the more traditional radio frequency and microwave areas. CEPD has employees on WSMR, New Mexico; Aberdeen Proving Ground, Maryland; and Ft. Hood, Texas

Directorate (CISD): Battlefield Environment Division (BED): The CISD-BED's mission is to enhance Warfighter effectiveness through environmental knowledge and technology, performing basic and applied research to advance the understanding of the atmosphere and its relationship to and impact on the performance of battlefield systems, personnel and operations. BED's predecessor organization through the early 1990s was the U.S. Army Atmospheric Sciences Laboratory headquartered at WSMR. At that time BED was integrated into the corporate U.S. Army Research Laboratory, headquartered in Adelphi, Maryland, with personnel and R&D functions on both sites. The current missions of BED's Atmospheric Modeling Branch and the Atmospheric Dynamics Branch on WSMR are to perform research required to help the Soldier, commander and weapons system designer better understand and model atmospheric effects on performance and to maximize their success during battlefield operations, especially in the lower atmosphere and over complex terrain. To accomplish this, the branches characterize meteorology in the boundary layer at high spatial and time

resolutions through theoretical, basic research and the development of "Nowcast" weather prediction models providing highly detailed, short-term forecasts of atmospheric conditions over complex and urban terrain in three dimensions and in near-real-time. A diagnostic 3D wind field model characterizes the effects of streets and buildings on wind flow as well as the effects of mountain ridges and forest or jungle canopies. Weather decision aids provide planners and operators with intuitive warnings of many types of weather hazards on weapons systems, personnel and operations and can automatically find the best route for manned and unmanned aircraft around adverse weather. Methods are developed to provide meteorological correction data for artillery firing solution systems. To support these activities, BED is establishing an extremely high-resolution network of environmental sensors within and adjacent to WSMR called the Meteorological Sensor Array. Products are transitioned to a variety of Army entities and to the US Air Force 557th Weather Wing (formerly the Air Force Weather Agency) for support of forward-deployed troops. Weather impacts and Nowcasting models are exploited in command and control systems such as the Distributed Common Ground Station-Army (DCGS-A) and the Tactical Airspace Integration System (TAIS). Learn more about the Army Research Laboratory at www.arl.army.mil.

U.S. ARMY RESEARCH, DEVELOPMENT AND ENGINEERING COMMAND, SURVIVABILITY/LETHALITY ANALYSIS DIRECTORATE

The Research, Development and Engineering Command (RDECOM) provides innovative research, development and engineering to produce capabilities for decisive overmatch to the Army against the complexities of the current and future operating environments in support of the Joint Warfighter and the Nation. The Survivability/Lethality Analysis Directorate (SLAD) provides expert technical advice and solutions that enable U.S. Army personnel and equipment to have increased lethality, and survive and function effectively in hostile multi-domain environments. Portions of two SLAD divisions are located on White Sands Missile Range: the Cybersecurity Vulnerability Analysis and Assessment Division (CVAAD) and the Electronic Warfare Analysis and Assessment Division (EWVAAD).

The RDECOM/SLAD/CVAAD provides complete lifecycle Cybersecurity vulnerability analyses (Cooperative Vulnerability Identification (CVI) & Cooperative Vulnerability Penetration Assessments (CVPA)) to Army acquisition, operational units, and HQDA



A Terrier Black Brant research rocket blasts off from the Navy's Launch Complex 36.

ORGANIZATIONS AND MISSIONS

(CIO/G6 & G3/5/7) to ensure Army readiness and support Army modernization priorities. Per AR 73-1, RDECOM/SLAD/CVAAD conducts penetration testing, vulnerability analyses, and vulnerability assessments for Government agencies and industry partners, to include system developers, Program Executive Officers (PEOs), Program Managers (PMs), and supports Army Test and Evaluation Command (ATEC) during Developmental Testing (DT) and Operational Testing (OT). The RDECOM/SLAD/CVAAD also manages personnel and tools used to conduct cybersecurity penetration testing, vulnerability analyses, vulnerability assessments, and cybersecurity resiliency analyses (prevent, mitigate, recover (PMR)) during Acquisition Test and Evaluation (T&E) Adversarial Assessments (AA). In addition, RDECOM/SLAD/CVAAD conducts Cybersecurity System of Systems Network Vulnerability Assessments (Cyber SoS NVAs) on Army Software Block (SWB) Capability Set (CS) 11-12 Tri-annual and Common Operating Environment (COE) network architectures for

HQDA CIO/G-6 during Army Interoperability Certification (AIC) in support of material release. In support of Army Modernization priorities, RDECOM/SLAD/CVAAD conducts cybersecurity experimentation and analyses by providing technical subject matter expertise, experimentation support and Survivability, Lethality, and Vulnerability analyses across the command to include Cross Functional Teams, and informs Army leadership on cyber-enabled and electromagnetic threats across all systems and capabilities destined for acquisition. RDECOM/SLAD/CVAAD also conducts science and technology (S&T) research to develop cyber tools used to assess emerging technologies and state-of-the-art tools, techniques, and methodologies to focus on Army's readiness and modernization priorities. The RDECOM/SLAD/CVAAD develops in-house, custom, cyber tools to support both T&E and S&T initiatives; it is a unique organization that develops and executes the tools to conduct cyber analyses for the Army. The CVAAD has also partnered with The University of Texas El Paso and formed the Center for Cyber Analysis and Assessment, which provides external researchers access to cybersecurity tools and technology. In addition, CVAAD is currently extending their physical foothold and is similarly collaborating with New Mexico State University.

The EWVAAD serves as the principal activity in the Army for determining SLV of Army systems in all environments against the full spectrum of electronic warfare (EW) threats. The EWVAAD provides SLV analysis and evaluation expertise to acquisition PEOs and PMs

supporting a wide range of Army weapon, communication, navigation, and sensor systems. EWVAAD scientists and engineers provide laser vulnerability assessments as well as EW analyses and monitoring in laboratory, hardware-in-the-loop, anechoic chamber environments as well as DT and airborne OT. The EWVAAD researches, investigates, and recommends counter-countermeasures for Army systems to reduce their susceptibilities/vulnerabilities and to ensure the optimum survivability and lethality in threat environments. Additionally, the EWVAAD provides timely, accurate, and comprehensive SLV analysis, assessments, and advice concerning EW threats to system managers, researchers, developers, users, decision makers, and independent evaluators.

RDECOM/SLAD and its predecessor organizations have carried out missions on WSMR since 1952. The SLAD consists of 366 scientists, engineers, technicians, and administrative support personnel located at WSMR, NM; Aberdeen Proving Ground, MD; Fort Hood, TX; and Huntsville, AL.

CENTER FOR COUNTERMEASURES

The Center for Countermeasures (the Center) is a joint activity that directs, coordinates, supports and conducts independent countermeasure/counter-countermeasure (CM/CCM) T&E activities of U.S. and foreign weapons systems, subsystems, sensors and related components. The Center accomplishes this work in support of DOT&E, the Deputy Assistant Secretary of Defense for Developmental Test and Evaluation ((DASD(DT&E))), weapon systems

developers and the services. The Center's testing and analyses directly support evaluations of the operational effectiveness and suitability of CM/CCM systems.

Specifically, the Center:

- Determines performance and limitations of missile warning and aircraft survivability equipment (ASE) used on rotary-wing and fixed-wing aircraft.
- Determines effectiveness of precision guided weapon (PGW) systems and subsystems when operating in an environment degraded by CMs.
- Develops and evaluates CM/CCM techniques and devices.
- Operates unique test equipment that supports testing across the DOD.
- Provides analyses and recommendations on CM/CCM effectiveness to Service Program Offices, DOT&E, DASD (DT&E) and the services.
- Supports service member exercises, training and pre-deployment activities.

The Center makes recommendations for improvements to system developers and decision-makers as well as to the OSD. These activities and recommendations contribute greatly to the production of robust ASE and CM-hardened U.S. weapons systems and the improved capabilities necessary for these systems to function effectively in the increasingly hostile environments found on the modern asymmetrical battlefield.

Fully mobile test teams from the Center are capable of operating under a wide variety of environmental CM/CCM test operation



CCM deploys a team to Nellis AFB Urban Training Area to provide surface-to-air missile (SAM) threats during a warfighter training venue.

environments at CONUS and OCONUS locations. Personnel develop, maintain and operate an inventory of unique CM equipment and techniques not under development nor available within other DOD components' programs.

For more information, call 575-678-7221, email rodney.l.rogers12.civ@mail.mil or write to Director, Center for Countermeasures, Building 1407, Martin Luther King Jr. Ave., White Sands Missile Range, NM 88002-5519.

DEFENSE THREAT REDUCTION AGENCY

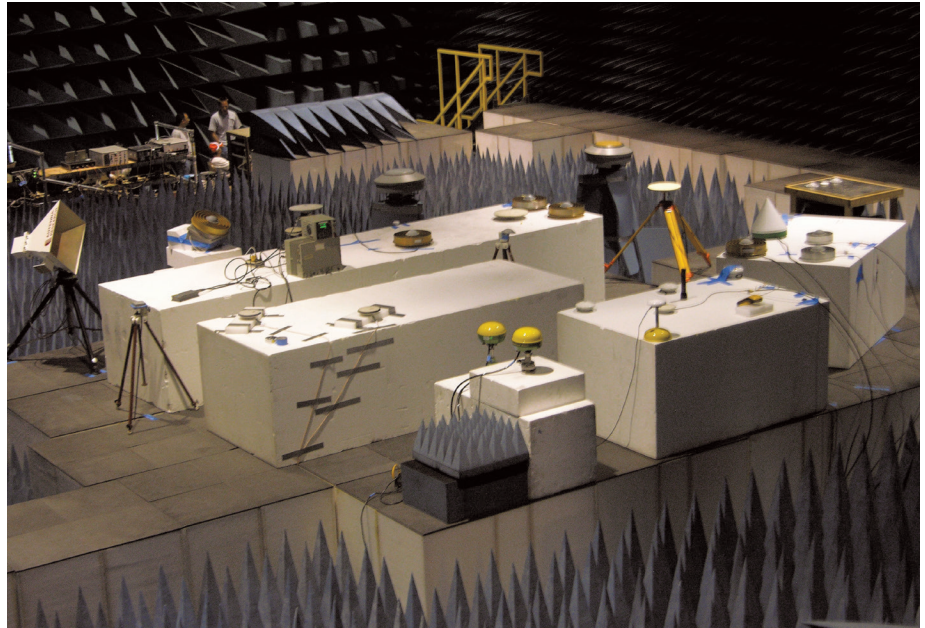
The Defense Threat Reduction Agency (DTRA) is a combat support agency that responds directly to Combatant Command needs and operational requests. DTRA enables the Department of Defense, the U.S. Government and international partners to counter and deter weapons of mass destruction (WMD – chemical, biological, radiological, nuclear and high-yield explosives) and improvised threat networks.

DTRA has key roles in each of the principle tenets of the National Defense Strategy: 1) Strong Nuclear Deterrent, 2) Decisive Conventional Force, and 3) New Approaches to Compete in the "Grey Zone." The DTRA Research and Development Directorate (RD) provides science, technology and capability development investments that maintain the U.S. military's technological superiority in countering WMD and asymmetric threats, mitigating the risks of technical surprise and responding to the warfighter's urgent technical requirements.

The RD Enabling Capabilities Department (RD-EC) creates, provides and maintains relevant enabling capabilities to support the RD portfolio of work. These capabilities include credible test beds, responsive test design, robust processes exercised over decades, test beds/structures to support full-spectrum counter-WMD testing and technology evaluation, nationally recognized subject matter experts, essential data capture and data analysis of results. RD-EC is located at DTRA Headquarters on Fort Belvoir, Virginia, and Kirtland Air Force Base, New Mexico, and maintains a variety of test beds and structures on the White Sands Missile Range. To learn more about DTRA, visit www.dtra.mil.

DOD AREA FREQUENCY COORDINATOR

The Department of Defense Area Frequency Coordinator at White Sands Missile Range, or DOD-AFC (WSMR), is responsible for coordinating and authorizing spectrum usage for DOD customers operating within the area of responsibility (AOR) defined as the entire state of New Mexico, west Texas, western Colorado and eastern Utah.



The Army Research Laboratory EMVAF Antenna Field.

The DOD-AFC (WSMR) reports to Headquarters, Department of Army, Network Enterprise Technology Command (NETCOM), ACofS G-3/5, Current Operations Division, Spectrum Operations Branch. As such, the DOD-AFC follows the Army procedures and policies for coordinating spectrum allocation and authorization for research, development, acquisition, fielding and operation of Army material requiring spectrum support. The DOD-AFC provides direct spectrum support to the WSMR and Fort Bliss installation spectrum managers (ISMs).

As a DOD entity, DOD-AFC (WSMR) also provides ancillary spectrum support to the ISMs at Holloman AFB (Air Education and Training Command), Cannon AFB (Air Force Special Operations Command) and Kirtland AFB (Air Force Global Strike Command), as well as the Navy detachment at WSMR. As such, in addition to Army spectrum guidelines, the DOD-AFC (WSMR) must also follow the Air Force and Navy spectrum guidelines necessary to implement the National Telecommunications and Information Administration (NTIA) Manual of Regulations and Procedures for Federal Radio Frequency Management and the provisions of Department of Defense Directive (DODD) 4650.1, Policy for Management and Use of the Electromagnetic Spectrum.

The area frequency coordinator is authorized to negotiate band sharing and mediate spectrum conflicts and radio interference directly with all area government and civil activities, to include NASA, the Federal Aviation Administration (FAA), the Federal Communications Commission (FCC) and the National Radio

Astronomy Observatory (NRAO). This decentralized organizational structure allows maximum flexibility for test operations and reduces the impact of lengthy processing at the national coordination level.

For additional information, contact the DOD-AFC (WSMR) office at 575-678-5417, DSN 258, or email usarmy.wsmr.imcom-central.list.dodafc@mail.mil.

LOGISTICS READINESS CENTER

The Logistics Readiness Center (LRC), formerly Directorate of Logistics (DOL), is a leader in installation support, providing supply, equipment maintenance and repair, and transportation services in a timely and cost-effective manner to meet the requirements of the White Sands community and tenant organizations. Customers receive support through four divisions.

The Plans and Operation Division provides logistical planning and coordination for mission support, training and special events. It also provides equipment management for the garrison.

The Supply and Services Division orders, receives, stores and issues all classes of supply except medical through the SSA as well as operating the central receiving point. The Supply and Services Division also manages the Installation Property Book; Central Issue Facility; hazardous material management program (HAZMART); and Petroleum, Oil and Lubricant (POL) branches. The POL provides water and bulk fuel to remote areas of the range to support and sustain training throughout the

ORGANIZATIONS AND MISSIONS

ARFORGEN cycle, for test missions and special events. It also assists with financial liability investigations of property loss.

The Maintenance Division provides all types of maintenance services for tactical and non-tactical vehicles, material handling equipment, combat equipment, construction equipment, power support equipment and weapons. The Generator Shop provides generator support for the test missions, training and special events and provides on-site repair of generators. The Maintenance Division oversees the reset mission.

The Transportation Division consists of three branches. The Personal Property Processing Office (usarmy.wsmr.asc-lrc.list.lgtp@mail.mil) is responsible for household goods (HHG) counseling and quality assurance for all government and military personnel arriving and departing within their area of responsibility. PPPO also assists with official travel coordinated through Carlson Wagonlit Travel/Sato Travel (CWT/SATO). The Freight Movement Branch (usarmy.wsmr.asc-lrc.list.lgtf@mail.mil) is responsible for the receiving and shipping all types of government/military cargo within its area of responsibility, which includes Truckload, Less-Than-Truckload and Small Package. The Vehicle Operations Branch (usarmy.wsmr.asc-lrc.list.lgtv@mail.mil) is responsible for the fleet management of non-tactical vehicles (NTV) leased from the General Services Administration (GSA). The Transportation Motor Pool (TMP) operations oversee the dispatch of the daily use U-Drive-It fleet and the monthly dispatch of mission support NTVs. Government equipment local transport and recovery is

also a transportation service provided by this branch.

For more information on the LRC, call 575-678-1743 or email: usarmy.wsmr.asc-lrc.list.lgt@mail.mil

NASA'S WHITE SANDS TEST FACILITY

Located on the southwest corner of the White Sands Missile Range is NASA's White Sands Test Facility (WSTF). WSTF maintains a key role in America's space program and space-related technology by conducting tests on materials and components required in today's innovative space vehicles and advancing the use of rocket engines that use nontoxic fuels through testing and evaluation.

An award-winning site, NASA's White Sands Test Facility is a diverse testing facility used in support of NASA, other government agencies, the U.S. military and private industry. The facility is a remote component facility of the NASA Johnson Space Center in Houston.

Located on 28 square miles, the White Sands Test Facility is a self-contained and remote testing entity. The facility has five core test capabilities: rocket propulsion testing, hypervelocity impact testing, propellants and aerospace fluids testing, oxygen systems testing and composite pressure systems testing. NASA's White Sands Test Facility maintains a full-service facility for precision cleaning, repair and functional testing of fluid components. WSTF's Hardware Processing Component Services Section (CSS) is responsible for the disassembly, cleaning, maintenance, reassembly and testing of pressure relief and pressure safety valves in compliance with American National Standards

Institute (ANSI) National Board Inspection Code (NBIC)/NB-23. After meeting the NBIC Part 3, Section 1 requirements, the WSTF Hardware Processing CSS is an approved "VR" certified facility holding the NBIC Certificate of Authorization and "VR" symbol stamp for the repair of pressure relief valves.

A key player in the space program since 1964, the test facility has created technical support capabilities for its customers, including chemistry and metallurgical laboratories, fabrication shops and clean rooms, which support the analysis, cleaning, refurbishment and calibration of equipment, hardware and test materials to stringent specifications. WSTF personnel have created safe system design and operations courses for oxygen, hydrogen, hypergolic propellants and other aerospace fluids and provide numerous opportunities for training and technology transfers of this information to other government agencies and private industry. NASA and contractors are all Occupational Safety and Health Administration Voluntary Protection Program Stars, denoting commitment and excellence to a safe work environment.

The facility maintains and operates nine rocket engine system test stands, six with long-duration, high-altitude simulation systems. In addition to existing hypergolic propulsion systems, WSTF also operates propellant supply systems for liquid oxygen, liquid methane and other hydrocarbons to enable testing of environmentally friendly, nontoxic rocket engines and propulsion systems. Other capabilities include a high-energy blast facility, oxygen-enriched atmosphere test facilities and hypervelocity impact test facilities. The site's hypervelocity testing is invaluable to NASA's understanding of micrometeoroid and orbital debris impacts to spacecraft to ensure the safety of crew and cargo. WSTF is engaged in extensive testing efforts to evaluate the compatibility of materials being considered for use in aerospace applications, including flammability and ignition susceptibility in varied atmospheres, off-gassing and out-gassing, thermal stability and toxicity. WSTF is involved in the evaluation and test of composite pressure systems safety, damage tolerance and use-life evaluation.

The site is certified to ISO 9001:2000, ISO 14001:2004 and ISO 9001:2008 Standard. For more information, visit www.nasa.gov/centers/wstf, call Robert Cort at 575-524-5521 or write to NASA-WSTF, P.O. Box 20, Las Cruces, NM 88004 to request capabilities data sheets.



The Joint High Power Solid State Laser system's beam director. The JHPSSL was originally built with the goal of advancing U.S. laser technology and not intended for deployment. Today, the system is used to conduct test missions looking at laser system capabilities.

U.S. ARMY FUTURES COMMAND RESEARCH AND ANALYSIS CENTER – WHITE SANDS MISSILE RANGE

The Research and Analysis Center - White Sands Missile Range (TRAC-WSMR) is one of four elements of The Research and Analysis Center (TRAC), which is headquartered at Fort Leavenworth, Kansas. TRAC is a subordinate organization under the Army Futures Command, headquartered in Austin, Texas. TRAC-WSMR is a highly skilled, analytic organization that conducts relevant studies of current and potential military operations worldwide to inform decision-makers about the most challenging issues facing the U.S. Army and the Department of Defense.

Since its inception in 1987, TRAC-WSMR studies have underpinned key acquisition decisions regarding nearly every material initiative or program that has been considered by the U.S. Army and the Department of Defense. TRAC-WSMR's three Studies and Analysis Directorates provide relevant and credible analysis to assess the effectiveness of current and future forces/systems.

To support the study process, TRAC-WSMR develops and maintains force-on-force combat simulations ranging from entity to brigade level. These include closed form, stochastic simulations and human-in-the-loop decision-making combat models. TRAC-WSMR assumes a major role in the research, development and improvement of combat modeling and simulation methodologies for the U.S. Army.

TRAC-WSMR has a robust Cost Analysis Division which projects the lifecycle costs of weapon systems, the associated personnel and facilities costs, and training costs. The TRAC WSMR cost division plays a vital role in each study that is completed and provides valuable information regarding the allocation of resources in the acquisition process.

Additionally, TRAC-WSMR has partnered with the Joint Modernization Command (JMC) to provide direct support to their efforts at Fort Bliss. TRAC-WSMR Forward is an integral part of the analysis that is conducted in support of the network, software and hardware advancements that are being developed as part of the JMC's semi-annual experimentation.

Recent TRAC-WSMR studies include: Extended Range Cannon Artillery (ERCA) Study, Cannon Delivered Area Effects Munitions Analysis of Alternatives (AoA), Mobile Protected Firepower AoA, Next Generation Combat Vehicle (NGCV) Support to Tank Automotive Research, Development, and Engineering Center (TARDEC) and analysis to support Cross Functional Teams.

For more information, visit www.trac.army.mil or call 575-678-4611.

NATIONAL GEOSPATIAL-INTELLIGENCE AGENCY WHITE SANDS MISSILE RANGE SUPPORT TEAM

The mission of the National Geospatial Intelligence Agency (NGA) is to provide accurate and timely expert analysis of worldwide gravity, satellite and positional information including imagery and mapping control for navigation, safety, intelligence, positioning and targeting in support of national security objectives. The White Sands Missile Range NGA Support Team acquires, analyzes, reduces and furnishes precise geodetic and geophysical survey information to WSMR Mission partners and other DOD customers outside WSMR. NGA provides ground truth verification for applications such as radar and telemetry calibration, operational test and evaluation, and target data for weapons testing as well as various special applications tailored to customer requirements. No one customer requirement is identical to another, and requirements are subject to change, as survey plans are fluid. For more information, contact Chief, White Sands Missile Range NGA Support Team, Building 1621, White Sands Missile Range, NM 88002 or call 575-678-2140.

TEST, MEASUREMENT AND DIAGNOSTIC EQUIPMENT SUPPORT CENTER

The Test, Measurement and Diagnostic Equipment (TMDE) Support Center (TSC) is a state-of-the-art, multidiscipline calibration facility with an extensive expertise in calibration and metrology, the science of measurement. Through laboratory hierarchy, the facilities secondary reference capability is traceable through the Army Primary Standards Laboratory (APSL) or the National Institute of Standards and Technology (NIST).

The TSC provides electrical, electronic, electromechanical, physical and dimensional, and radiation calibration services. As a reference laboratory, it directly supports numerous civilian (TSC) and Soldier (ATST) Army calibration centers in the western U.S. to include Alaska, Hawaii and Kwajalein Island. The TSC provides direct support to the warfighter and Soldiers carrying out their mission throughout the world.

In addition to WSMR, FORSCOM and TRADOC, the TSC supports several RDT&E and depot activities. Some of its customers include the Army National Guard, Army Reserve, U.S. Air Force, U.S. Coast Guard, U.S. Navy, U.S. Marine Corps, Foreign Military Sales, NASA, Federal Emergency Management Agency, various contractors and New Mexico State University.

The unique capabilities of TSC White Sands make for a perfect match with the research and development mission of White Sands

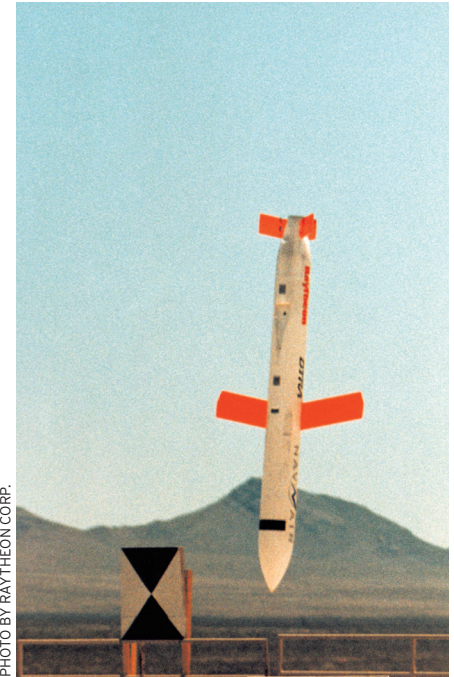


PHOTO BY RAYTHEON CORP.

A Tactical Tomahawk Penetrator Variant is tested by the Defense Threat Reduction Agency at White Sands Missile Range.

Missile Range and its test customers. The laboratory's technical diversity and expertise provide a one-stop location for calibration and metrology customer support. For more information, call 575-678-3120.

SECRETARIAT, RANGE COMMANDERS COUNCIL

The Secretariat, Range Commanders Council (RCC), is the administrative arm of the RCC. The RCC was established in 1951 and is a collaboration of member ranges whose mission is to utilize their collective resources to identify and solve shared range problems. As the only full-time element of the RCC, the Secretariat serves as the executive agent for commanders, directors and senior technical staff for all 19 member ranges (including NASA). The Secretariat frequently interfaces with the Test Resource Management Center; Director, Operational Test and Evaluation (DOT&E); and other key organizations to facilitate joint collaboration with the RCC on emerging issues impacting the range community. The Secretariat also publishes and disseminates technical standards widely cited as best practices by RCC members and nonmembers alike.

Visit RCC's website at www.wsmr.army.mil/RCCsite. It is also on Facebook at www.facebook.com/RangeCommandersCouncil and on LinkedIn at www.linkedin.com/groups/Range-Commanders-Council-8296599/about. The Secretariat is in Building 1510. For more information, call 575-678-1107.



Child Development Center



COMMUNITY SERVICES

AQUATIC CENTER

575-678-1068

www.wsmrmwr.com

The Aquatic Center in Building 462, adjacent to the Community Center, offers a 25-meter, eight-lane, indoor, year-round pool plus a 24-foot-diameter children's pool. The main pool is 3.5 feet deep at the shallow end and 12 feet at the deep end. There is a water slide, inner tubes, water basketball and the AquaClimb climbing wall. The center features two sun decks with lounge chairs and tables in addition to a covered patio – a perfect place for birthday or private parties. The Aquatic Center offers water aerobics and swimming lessons in addition to recreational lap swimming and open recreational swim.

Winter hours (Labor Day through Memorial Day): 6 a.m. to 6 p.m. Wednesday and Thursday, 11 a.m. to 6 p.m. Friday, 11 a.m. to 5 p.m. Saturday and Sunday, closed Monday and Tuesday. Closed Thanksgiving, Christmas, New Year's Day and Easter.

Summer hours (Memorial Day through Labor Day): 11 a.m. to 6 p.m. Monday through Friday, 11 a.m. to 5 p.m. Saturday and Sunday and holidays.

ARMY COMMUNITY SERVICE (ACS)

575-678-6767

www.myarmyonesource.com

www.wsmrmwr.com

www.facebook.com/WSMRACS

The Army Community Service Center is in Building 250, just east of the post theater. ACS provides a multitude of community-based services that foster growth, development and readiness of families assigned to the installation. The support is for service members, civilian employees, contract employees, retirees and their family members.

Hours: 7 a.m. to 2:30 p.m. Monday through Friday; closed Saturday, Sunday and holidays.

ACS programs and services include the following:

Newcomer orientation briefings are conducted at Army Community Service. All new service members, civilian employees, contract employees and their family members are highly encouraged to attend. Free child care for newcomer orientation briefings are available by making reservations at least 24 hours in advance with **Child and Youth Services (CYS)** at 575-678-6767 for the Child Development Center or 575-678-6767 for School Age Services. If your child is not registered with CYS, you will need to provide shot records before care begins. Please call 575-678-6767 for additional information.

The Information and Referral (I&R) program provides assistance to all persons inquiring by telephone, in person or by email that are coming to, residing at or planning a move away from White Sands. In addition, the following are available: White Sands telephone reference guide, contacts for human service resources in the area, and newcomers and permanent change of station (PCS) briefings. The I&R program is the primary resource and referral POC for White Sands residents, employees and visitors. Call 575-678-6767 for additional information.

The Army Emergency Relief (AER) program provides financial assistance to active-duty service members, retired service members and family members with power of attorney during times of valid emergencies. AER provides interest-free loans or grants to those who qualify for financial assistance. Food vouchers are also available for families in need. Active-duty service members are encouraged to seek AER assistance instead of going to payday loan companies. AER is administered through ACS. For information, visit the website www.aerhq.org or call 575-678-6767.

The Army Family Action Plan (AFAP) is a grassroots process that solicits input from the community to improve the quality of life not only on WSMR but throughout the Army. It allows military members, their families, civilian employees and retirees to let the Army leadership know what is working and what isn't, as well as suggest alternatives that may work. It alerts commanders and Army leaders to areas of concern that need attention and gives them the opportunity to quickly put plans into place toward resolving the issues. It starts with an annual local conference. At the conference issues selected from the community are discussed and presented to the command. Local issues are resolved locally, and those requiring higher level attention are forwarded to the Department of the Army. Call 575-678-6767 for additional information.

Army Family Team Building (AFTB) is an educational program that provides training to prepare everyone in the U.S. Army (including active-duty personnel, civilians, contractors, retirees and their family members) to function at the highest level, given any situation. The training improves personal and family preparedness, which enhances overall Army readiness. AFTB is a series of classes for (and taught by) military spouses and military members designed to give you the tools to survive in the military lifestyle. Learn about community resources, military terms, benefits, leadership skills and more. Call 575-678-6767 for additional information.

The Exceptional Family Member Program (EFMP) is a mandatory enrollment program based on public law and DOD mandates. It provides comprehensive community support, housing and personnel services to families with special needs. The EFMP ensures that medical and special education needs for exceptional family members are assessed, documented, coded and considered in the assignment process so that access to facilities and programs is available. Call 575-678-6767 for more information.

The Employment Readiness Program (ERP) was created to help with the needs

of military spouses and teens. The military lifestyle presents unique challenges to military spouses and teens that are looking for employment due to frequent relocations. The Employment Readiness Program was created to specifically address the employment needs of today's family members by providing the tools they need to successfully search for and obtain employment. ERP assists with career options, resumes, cover letters, job interviewing, federal employment, customer service training, office etiquette and entrepreneurship. Whether you are new to the job market, changing careers or a seasoned professional, the Employment Readiness Program will help you gain the tools needed to stay competitive in today's job market. Small business counseling and assistance is also available. Call 575-678-6767 for additional information.

The Family Advocacy Program (FAP) promotes family wellness and readiness by reducing family stresses that affect morale and performance and preventing child and spouse

abuse. Programs include awareness education, new parent support groups, youth violence prevention and special events. Classes are offered on stress management, parenting, conflict resolution, anger management, assertiveness training and other life skills training. Every week a parent-child group meets to network, create projects, practice skills and reduce stress. Call 575-678-3933 for additional information. The domestic violence 24/7 hotline number is 575-993-7413.

The Sexual Harassment/Assault Response & Prevention (SHARP) provides advocacy services for Service members, DA Civilians and Family Members over the age of 18 years in support of victims of sexual assault and complainants of sexual harassment. The SHARP program provides prevention, awareness, training, referrals, and resources for medical, counseling, law enforcement, and legal services. Call 575-678-3933 for additional information. The SHARP 24/7 hotline number is 575-993-0589.



PHOTO BY ERIN DORRANCE

Sparky the Firedog visits children at White Sands Missile Range's Child Development Center during the annual Puppy Parade March 10, 2016.



White Sands Missile Range community members walk a mile in female shoes during a Walk a Mile in Their Shoes event against domestic violence. The event was hosted by the Army Community Services.

The New Parent Support Program (NPSP)

helps parents cope with stress, manage the demands of parenting, build a support network, provide a safe and nurturing environment for children and find services in the local community. The Mommy/Daddy and Me Group, Parent Child Activity and Time Out for Adults meet weekly for fun, games, education and networking. Call 575-678-6767 for more information.

The Financial Readiness Program (FRP)

offers education, counseling and support services to assist service members and their families with their financial affairs, including living within their means and investing for the future. FRP focuses on improving the service member's personal financial status to become an informed consumer. Services include training in basic money management skills, financial counseling, and assistance with debt liquidation and developing a repayment plan. FRP determines the type and level of assistance required and makes appropriate referrals to civilian agencies. Financial assistance may be available through AER loans. Call 575-678-6767 for additional information.

Family Readiness Group (FRG) leadership classes and guidance are offered at ACS. The FRG is your direct connection to command information for your unit. Army OneSource is the central website that maintains information that helps support individuals, families and communities by developing, coordinating and delivering services that promote resiliency and stability during war and peace. For more information, go to www.mymilitaryonesource.com or call 575-678-6767.

The Mobilization and Deployment Readiness Program is designed to guide and educate military members and families on managing the complex process of deployment and reunion. We envision an adaptable Army community in which military families

understand and are ready for deployment, supported through its course, and prepared for homecoming and reunion. Family readiness is the preparedness and resilience of Army families to successfully adapt to the transitions required by the military lifestyle. Family member readiness is also an important part of Soldier readiness for mission. The Mobilization and Deployment Readiness Program has a large variety of educational materials, in several media formats, to help families understand and cope with the military lifestyle. Military members' readiness is essential to execute the military mission. It involves training and proper planning for personal and family affairs. Key items important for military member readiness are:

- If married, does their spouse have an ID card and copy of the military member's orders?
- If the military member has children, is there a viable child care plan for the duration of the deployment?
- Have arrangements been made for taking care of bills, residence, car, etc.?
- Has the military member obtained a power of attorney and will?
- Do family members know who the rear-detachment commander (RDC) is and how to contact the RDC?

Classes are offered in Family Readiness Group (FRG) leadership, FRG Fund Management, FRG Key Caller training, Family Readiness Support Assistant (FRSA) training and Care Team training. Call 575-678-6767 for additional information.

The Relocation Assistance Program (RAP) assists military members and their family members in dealing with stresses and problems they may encounter throughout their mobile military careers. The RAP provides relocation counseling and assistance to inbound and outbound individuals. These

services include outreach to identify target populations, pre-move and newcomers' orientations, the lending closet, supportive services to waiting and multicultural families, support of the military sponsorship program and use of the Military Installations and Plan My Move website. For information on relocating, visit Military Installations (MI) and Plan My Move (PMM) at www.militaryonesource.mil or call 575-678-6767.

The Army Volunteer Corps (AVC) is a new way of thinking about volunteers and volunteering within the Army. It is an umbrella that encompasses all volunteers and organizations using volunteers. No matter where individuals volunteer within the Army community, they have the same goal. People volunteer to contribute to the Army, to military members and to their family members. The intent of the AVC is to recognize commonality of purpose among all Army volunteers and to instill the same pride in being an Army volunteer as they now have for the organization where they provide their service. The establishment of the Army Volunteer Corps connects volunteers and demonstrates the Army's commitment to its volunteers. AVC organizes the efforts of all WSMR volunteers. If you are interested in becoming a volunteer, call 575-678-6767.

ARTS AND CRAFTS CENTER

575-678-5321

A well-equipped Arts and Crafts Center is in Building 426 on Dyer Street. The facility has woodworking, ceramics, stained glass, silver-smithing, pottery, wood-burned portraits and a frame shop. Framing is usually completed within one week. Classes are periodically offered in these and other crafts. The facility includes a sales area that carries a wide array of supplies. A trained staff is on duty to help with projects and teach new techniques. The Arts and Crafts Center is the go-to place for all your awards with engraving services for awards and plaques on wood, metal, glass or acrylic. Stop by and see what they can do for you. They have a wide assortment of hand-made items from pens to cutting boards to coin racks – perfect for that last-minute gift. Custom orders are welcome. The Arts and Crafts Center is also your headquarters for custom plaques. Limited only by your imagination, they can design a unique product you're looking for.

Hours: 9:30 a.m. to 6 p.m. Tuesday through Friday; 9:30 a.m. to 5 p.m. Saturday; closed Sunday, Monday and holidays.

AUTO SKILLS CENTER

575-678-5800

The Auto Skills Center provides a well-equipped facility for patrons to perform



Auto Skills Center staff provide technical assistance for self-help.

self-help, minor maintenance and repairs on their vehicles. The center provides tools, equipment and technical assistance as needed. It also offers services with fees to anyone without the talent or time to perform automotive maintenance and repair. The Auto Skills Center provides a variety of services for the White Sands workforce and invites the community to stop by the facility and see what is available. The cash-only car wash and vacuum area is open 24/7 so residents and employees can maintain their vehicles at their convenience.

Hours: 9 a.m. to 5 p.m. Tuesday through Friday; closed Saturday, Sunday, Monday and holidays.

BETTER OPPORTUNITY FOR SINGLE SOLDIERS (BOSS)

575-678-2844

Better Opportunities for Single Soldiers (BOSS) is a dynamic Department of the Army program that single Soldiers can participate in to enhance their quality of life, contribute to their community through service activities, and help plan and execute their own recreation and leisure events. BOSS meets bi-weekly at noon to 1 p.m. Tuesdays at the Frontier Club.

BOWLING CENTER

575-678-3465

The Roadrunner Lanes Bowling Center is in Building 234 on Dyer Street. Roadrunner Lanes has 10 modern, synthetic lanes, a full-service snack bar and a full-service bar and lounge. The center is equipped with an automated Brunswick Scoring System and kid-friendly bumper rails. Complimentary instructions are

available for beginning bowlers. Bowling birthday packages are also available. The bar and lounge features multiple large-screen TVs and offers various live entertainment, disc jockeys and karaoke with special events throughout the year. The snack bar has a variety of grilled and deli sandwiches, salads, appetizers and shakes.

Bowling hours: 11 a.m. to 8:30 p.m. Monday through Saturday, 11 a.m. to 6 p.m. Sunday.

Coyote Snack Bar hours: 11 a.m. to 8:30 p.m. Monday through Saturday, 11 a.m. to 6 p.m. Sunday.

Spare Time Lounge hours: 4 to 8:30 p.m. Tuesday through Friday; closed Saturday, Sunday and Monday.

Closed on holidays.

CHAPEL SERVICES

575-678-2615

Religious services are conducted at the Main Post Chapel in Building 265 and at Sierra Chapel, Building 145.

Main Post Chapel

- General Protestant Service: 10 a.m. Sunday.
- Gospel: 11:30 a.m. Sunday.
- 3rd Sunday Combined Protestant Service 10 a.m. Sunday.
- Protestant/Catholic Sunday School and Child Care is offered on Sunday during school year contingent on availability of volunteers and funding constraints.

Sierra Chapel (Catholic Service)

- Sunday Catholic Mass: (Pending Contract Approval)
- Daily Mass (Monday-Friday): (Pending Contract Approval)

Age appropriate activities are offered along with volunteer opportunities as part of the Religious Support Office Religious Education Program. Religious education supports religious studies, trainings, baptisms, confirmations and various types of pastoral counseling.

CHILD AND YOUTH SERVICES

Child and Youth Services (CYS) provides a diverse program of activities for eligible children and youth ages 6 weeks through 12th grade. Programs are designed to promote leisure and social skills, life skills, citizenship and leadership. Additionally, the program offers mentoring, intervention and support services. CYS programs are available for active-duty military personnel, DOD civilian personnel and DOD contractors working at White Sands.

PARENT CENTRAL SERVICES

575-678-2441

Parent Central Services is your one-stop shop for all CYS programs. This office provides information and registration for all CYS programs. In addition, Parent Central Services can assist with placement, special events and Kids on Site. Children must be registered before using any CYS programs Parent Central Services is in Building 501 on the second floor.

Hours: 7 a.m. to 4:30 p.m. Monday, Tuesday, Wednesday and Friday; 7 a.m. to 5:30 p.m. Thursday; closed Saturday, Sunday and holidays.



PHOTO BY JIM ECKLES

Bicycling is popular on the range.

COMMUNITY SERVICES



Children and their parents take off running in search of eggs during an Easter egg hunt.



PHOTO BY LUCIANO VERA

A member of Girl Scout Troop 546 helps dig a hole in a Pollinator Habitat Garden outside Building 163 to attract pollinators such as bees and hummingbirds.



PHOTO BY LUCIANO VERA

Trish Cutler, right, a wildlife biologist with the Environmental Stewardship Branch at White Sands Missile Range, shows members of Girl Scout Troop 546 where they will be working to help with the Pollinator Habitat Garden.

CHILD DEVELOPMENT CENTER 575-678-2059

The Child Development Center (CDC) offers child care options such as full-day, part-day and hourly care for children ages 6 weeks to 5 years as well as Strong Beginnings, a pre-K program for children getting ready to start kindergarten. The Thomas J.P. Jones Child Development Center provides quality and affordable child care that is accredited with the National Association for the Education of Young Children and is fully certified with the DOD. The Thomas J.P. Jones Child Development Center is in Building 272.

Hours: 5:30 a.m. to 6 p.m. Monday through Friday; closed Saturday, Sunday and holidays.

FAMILY CHILD CARE 575-678-0585

Family Child Care homes provide flexible hours and a comfortable familial setting. Most homes offer full-day, part-day and hourly care. Special services may include 24-hour and long-term care during mobilization and training exercises; evening and weekend care; and care for special-needs children, newborns and mildly ill children. The Family Child Care office is in Building 272.

SCHOOL AGE CARE 575-678-4140

School Age Care (SAC) provides supervised before- and after-school activities for children in kindergarten through fifth grade during the school year and summer camps during the summer school break. SAC is accredited by the Council on Accreditation and Department of Defense certified. School Age Care is in Building 1316.

MIDDLE SCHOOL AND TEEN PROGRAM 575-678-7859

The Middle School and Teen (MST) Program offers a variety of social, leisure, physical and developmental activities for youth in middle and high school. Many activities and clubs are offered through on- and off-post collaborations with Las Cruces public schools, FMWR activities, Character Counts, 4-H and Boys & Girls Club of America. The MST program is in Building 1318.

CYS YOUTH SPORTS PROGRAM 575-678-6022

This program offers a wide range of positive sports, fitness program options and environments that promote healthy development of all children and youth. The Youth Sports Program offers a variety of team and individual sports opportunities such as soccer, basketball, cheerleading, baseball and clinics in various other sports such as golf, tennis, etc. Sports programs are age-specific with an emphasis on fun. The CYS Sports and Fitness Office is in Building 1318.

SCHOOL LIAISON OFFICE 575-678-7093

The school liaison officer provides access to a wide range of resources to facilitate military youth education transitions. The School Liaison Office provides parents with information on the local school system's policies, procedures, programs and schedules and can collaborate with parents to ensure academic success. The School Liaison Office is in Building 501 on the second floor.

SKIES UNLIMITED 575-678-5505

SKIES Unlimited offers instructional programs for children and youth such as arts and crafts, swimming, musical instruction and children's self-defense. Classes are designed to expand their knowledge, inspire them and allow them to acquire new skills without having to leave WSMR. If you are older than 18 years old and would like to share your hobbies and talents with the youth of the White Sands Missile Range community, please contact the SKIES Unlimited program director. Youth have shown interest in specialized areas such as piano, guitar, gymnastics and martial arts. We encourage instructors with other areas of expertise to apply also.

HIRED! 575-678-7704

The Hired! Apprentice Program is a workforce preparation and apprenticeship enterprise designed to meet the employment and

career exploration needs of Army teens 15 to 18 years of age.

COMMISSARY

575-678-3336

The commissary features modern equipment in a shopping environment typical of larger supermarkets. Customers get "Best Value Items" that are the lowest prices found in the Defense Commissaries Program. The commissary carries thousands of items in its grocery, produce, meat and deli departments. The produce and deli departments can help save consumers time by providing trays and baskets for special occasions. The commissary, Building 262, is across from the Post Exchange. For more information, visit www.commissaries.com.

Hours: 10 a.m. to 7 p.m. Tuesday through Thursday, 10 a.m. to 6 p.m. Friday, 10 a.m. to 4 p.m. Saturday, 11 a.m. to 4 p.m. Sunday, closed Monday. Disabled patrons may begin shopping 30 minutes prior to regular commissary hours.

COMMUNITY CENTER

575-678-4134

The Community Center, Building 1338 Ripley St, is where to go for banquet tables and chairs for your gatherings. Need something special for birthdays or special occasions? Stop by the Community Center and order a balloon bouquet. Make sure to ask about the monthly Bingo program.

Hours: 9 a.m. to 5 p.m. Monday through Friday, closed Saturdays, Sundays and holidays.

COMMUTER TRANSPORTATION

New Mexico Park and Ride operates a commuter bus service from Las Cruces to White Sands Missile Range. For schedule information, call 866-551-RIDE (7433). DA civilians and active Army can qualify for the Mass Transportation Benefit Program (MTBP) and receive vouchers to ride in qualified mass transportation. For more information, visit www.whs.mil/mass-transportation-benefit-program.

DENTAL CARE

575-674-3597

1363 Aberdeen Ave.

The WSMR Dental Clinic is staffed to provide comprehensive dental care for active-duty personnel.

Hours: 7 a.m. to 4 p.m. Tuesday and Thursday. Dental services on Monday, Wednesday and Friday are provided at William Beaumont Army Medical Center. Closed for lunch noon to 1 p.m.

Hours subject to change. Please call for updated schedule.

MOTOR VEHICLES DEPARTMENT

575-678-8800

A New Mexico Motor Vehicles Department office is in Building 1338 Ripley St. Services include New Mexico Drivers licenses, New Mexico ID cards, titles, registrations and VIN Inspections as well as New Mexico Driver's licenses and CDL testing.

The MVD only accepts credit and debit cards.

Hours: 9 a.m. to 4:30 p.m. Monday through Friday, closed Saturdays, Sundays and holidays.

EDUCATION SERVICES DIVISION

575-678-4716

The Fort Bliss Army continuing Education System (ACES) provides education services to the WSMR community and Soldiers. Education services provided include counseling; personnel testing and leader enhancement training; enhance education levels through college programs, financial aid and distance learning. An education counselor is available on-site Mondays at the PDC, Building 465, Room 151. All testing and counseling on other business days are available at the Fort Bliss Education Center. For information, call 575-678-4716 (Mondays only) or 915-568-6792..

ENVIRONMENTAL DIVISION NUISANCE WILDLIFE ISSUES)

575-678-2225

With so much wilderness area, it is inevitable that people working and living on WSMR will come into contact with wildlife. How we handle these human-wildlife interactions is crucial in maintaining the delicate balance between supporting missions (and other human activities) and supporting a healthy rangeland. The Environmental Division provides helpful information for dealing wildlife issues and assists when negative encounters occur with wildlife. Contact the office 7 a.m. to 4:30 p.m. Monday through Friday for assistance with all wildlife (snakes, bats, birds, bobcats, coyotes, raccoons, cougars, etc.)

EQUAL EMPLOYMENT OPPORTUNITY OFFICE

575-678-2831

Located on the second floor of Building 124, Rooms 235-40, the EEO Office advises the WSMR Senior Commander, the Garrison Commander and the WSMR community on equal employment opportunity laws, regulations, policies and processes. The office additionally oversees diversity and inclusion initiatives and advises employees and management on reasonable accommodations for disabling conditions. The mission of the EEO Office is



PHOTO BY JOSE SALAZAR

A participant channels Wonder Woman during a SHARP 5K run against sexual assault and harassment. WSMR holds several 5K walk/run events throughout the year.

to work towards a discrimination-free environment based on fairness, equity and sound management. All federal employees have the right to access the EEO Office's services on official time without fear of reprisal. If you believe you have been discriminated against in any employment-related matter due to one or more of the following, please contact the EEO Office for assistance and information about your rights: race, color, national origin, sex (including pregnancy, gender identity and sexual orientation), religion, disability (mental and/or physical), genetic information, age (40 years or older) or reprisal for prior protected EEO activity (opposition to discrimination/participation in the EEO complaint process).

FRONTIER CLUB

575-678-2055

The Frontier Club is at the base of the beautiful Organ Mountains. The Frontier Club is the center for special events at White Sands Missile Range. The club is open for breakfast, serving grab-and-go breakfast items, fresh

COMMUNITY SERVICES

coffee, and **made-to-order** omelets and burritos. Lunch features daily entree specialties, a soup and salad bar, **made-to-order** deli sandwiches, hot grilled sandwiches and freshly baked cookies. The daily entree specials feature a wide array of cuisines, including many Southwestern favorites. Lunch offers patrons the opportunity to dine on the Veranda Patio where one can "graze and gaze" with a beautiful view of the Organ Mountains. The Frontier Club also provides **full-service** banquets and catering. The club has several banquet rooms that can seat 45 to 300 people, including a large ballroom. The Frontier Club is a hidden treasure for weddings and receptions. We offer **high-quality**, affordable menu options for that special day, and our Veranda Patio offers impressive views of the Organ Mountains that make for a beautiful background for weddings and receptions. The Frontier Club is in Building 1330 on Martin Luther King Drive.

Breakfast hours: 6:30 to 9 a.m. Monday through Friday.

Lunch hours: 11 a.m. to 1 p.m. Monday through Friday; closed Saturday, Sunday and holidays.

Pizza Night: 3 to 6:30 p.m. Friday

HEALTH CARE

McAFEE U.S. ARMY HEALTH CLINIC

575-674-3500

www.facebook.com/McAfeeUSAHC

- **Health Clinic Hours:** 8 a.m. to 5 p.m. Monday, Tuesday, Wednesday and Friday; 1 to 5 p.m. Thursday.
- **Occupational Health (OH) Clinic:** 7:30 to 4:30 p.m. Monday, Tuesday, Wednesday and Friday; 1 to 4:30 p.m. Thursday.
- **Pharmacy:** 8 a.m. to noon and 1 to 4:45 p.m. Monday, Tuesday, Wednesday and Friday; 1 to 4:45 p.m. Thursday. (Please call for refills: 575-678-7009 Please expect 2 days to refill, so plan in advance)
- **McAfee Dental Clinic:** 7 a.m. to 4 p.m. Monday and Wednesday (active duty only) 575-674-3597. Dental services on



Tuesday, Thursday or Friday, are provided at William Beaumont Army Medical Center.

Our Services

Ambulance services are available 24/7. Ambulance services can be activated by calling 575-678-1234 (on your cell phone) or through the 911 system (from a landline).

McAfee U.S. Army Health provides health-care services on an appointment basis to all Tricare enrolled eligible beneficiaries within the White Sands Missile Range community and surrounding areas. McAfee provides outpatient healthcare, pharmacy, occupational health, Industrial Hygiene, Behavioral Health/social work services, well-woman exams, laboratory, radiology, and immunizations. Limited services are offered for pediatrics, optometry and physical therapy services (call for availability).

Referrals to specialty care are made by the Primary Care Provider. Patients can follow up on their referrals by contacting Referral Management at 915-742-2273, option 3. Specialty appointments are booked through William Beaumont Army Medical Center (WBAMC) or a civilian network provider. To book an appointment at WBAMC, call 915-742-2273.

Occupational Health and Industrial Hygiene are available for occupational health-related injuries and complaints, pre-employment screenings and Personnel Reliability Program monitoring. For more on either the hours or capabilities of these sections, please call our front desk team members at 575-674-3500.

Nurse Advice Line (NAL): TRICARE beneficiaries can call the Nurse Advice Line (NAL) at 800-874-2273 (Option 1), 24/7, for professional medical advice from registered nurses available to answer a variety of urgent health-care questions. NAL is available at no cost to beneficiaries and helps callers make informed decisions about self-care at home or when to see a health care provider. The NAL registered nurses ask a series of questions about a caller's specific concerns to advise when and how to seek care for an urgent problem or give instruction on self-care at home. Also, if your child is ill, the Nurse Advice Line routes your call to a nurse who has special pediatric training. For quality and safety purposes, you will be asked to have your child present for the call so the nurse can perform an accurate assessment. If you want a follow-up call, the Nurse Advice Line calls you back to check on your child.

Healthcare Portal/TRICARE online: You must register to use this secure message management service. It is a way to request appointments and medication renewals, send a message to the clinic nurse or your Primary Care Manager, and to review your health



Colorful hot air balloons are often seen in the skies over southern New Mexico.

PHOTO BY ELLIS NEEL

record. The clinic is also able to communicate with enrollees to send important information, such as clinic closures or updates on your healthcare.

- **Emergencies:** 911 (from a landline) or 575-678-1234 (from a cell phone)
 - **Appointments:** 575-674-3500 or online through Tricare online
 - **Nurse Advice Line:** 800-874-2273 (Option 1)
 - **Office of the Commander:** 575-674-3600
 - **Immunizations:** 575-674-3500
 - **Industrial Hygiene:** 575-674-3518
 - **Medical Records Fax:** 915-742-7459
 - **Occupational Health:** 575-674-3500
 - **Pharmacy Prescription Refill Line:** 575-678-7009
 - **Preventive Medicine:** 575-674-3520
 - **Behavioral Health Services:** 575-674-3500
- Clinic information is also available at our Face-book page: www.facebook.com/McAfeeUSAHC. Please LIKE our face-book page.

DENTAL SERVICES

Dental services are provided to all active-duty personnel.

- **Dental clinic appointments:** 575-674-3597
- **Dental emergencies:** 510-825-2608

INSPECTOR GENERAL

575-678-3902

The inspector general is a confidential fact-finder for the commander and advises him on all matters affecting mission performance, discipline, morale, esprit de corps, readiness and economy. The inspector general office provides support to all military personnel,

family members, DOD civilians, retirees, contractors and anyone having an issue with the U.S. Army. The office is a full-service inspector general office, providing all four inspector general functions: assistance; inquiries and investigations; inspections; and teach and train. Anyone wishing to discuss an issue with or request assistance from the inspector general can do so confidentially and without fear of reprisal. The office of the inspector general is in Building 124 and open during regular duty hours. For more information, visit www.wsmr.army.mil/Pages/InspectorGeneral.aspx.

LEGAL SERVICES

575-678-1263

The legal assistance section of the Office of the Staff Judge Advocate provides legal services to the community. Fully qualified practicing legal assistance attorneys provide confidential advice and other assistance. Services are available to active-duty and retired personnel of all services and their family members. Professional legal assistance services include legal advice and related services concerning the laws of marriage, divorce, adoption, immigration, change in name, civil damage actions, wills and estates to mention a few. The claims department is responsible for claims filed against the Army within the state of New Mexico. It routinely processes tort claims.

The Office of the Staff Judge Advocate is in Building 124, Room 108. Appointments for legal assistance problems are required. Powers of attorney and notary public service are provided on a walk-in basis. It is helpful to call the office beforehand to ensure you bring all documents relating to legal problems. There is no charge for any of the services.

To file a personal property claim, go to <https://www.jagcnet.army.mil/Pclaims> to find more information on how to file a claim (to include the trifold on the A, B, Cs of Claims) or call the Center at 502-626-3000 or DSN 536-3000 with questions. You also can email the CPCS at usarmy.knox.hqda-otjag.mbx.cpcs@mail.mil.

LEISURE TICKET SERVICES (LTS)

575-678-4134

Want to take the family on vacation? Want to act like a kid again at Disneyland? Want discounted tickets to local attractions such as El Paso's Wet and Wild or Western Playland? The Leisure Ticket Service office is the place to go. Located in Building 1338 Ripley Street, the LTS office carries discounted tickets to major amusement parks and select hotels. The LTS office also offers Allen Theater Movie passes at discounted prices which allow you to see the latest movies. The LTS office also offers

military promotional Disneyland and Disney World tickets.

Hours: 9 a.m. to 5 p.m. Monday through Friday, closed Saturday, Sunday and holidays.

LIBRARY

575-678-5820

The Post Library serves the educational, recreational and technical needs of the WSMR community with diverse materials, services and programs. Located in Building 465, the library offers over 25,000 books, DVDs and video games as well as 24/7 access to digital magazines, eBooks, eAudiobooks and online learning resources. Programs for children, adults and the whole family are offered monthly, and access to MakerSpace stations is available during normal hours. Computers with CAC readers, Wi-Fi, printing, copying, faxing and scan-to-email services are available and free.

Hours: 9 a.m. to 5 p.m. Monday through Saturday. Closed Sunday and holidays.

MILITARY PERSONNEL SERVICES

575-678-7645

The Military Personnel Services Division is in Building 465. The office provides military personnel manning functions for all military on the installation. It provides assistance on military personnel requirements, authorizations, readiness and strength management. A wide range of personnel service support is available, which includes personnel records, military awards, evaluations, identification cards, retirement services, in- and out-processing and mobilization processing, as well as liaison

with the Fort Bliss Soldier for Life - Transition Assistance Program (SFL-TAP) and Casualty Assistance Center.

Hours: 8 a.m. to 4 p.m. Monday through Wednesday, 10 a.m. to 4 p.m. Thursday and 8 a.m. to 3 p.m. Friday.

MUSEUM

575-678-2250

Exhibits and displays at the museum explore the evolution of testing at White Sands since 1945 and also provide a window on the prehistory of the region, early pioneering efforts, mining and the Frontier Army's contributions to the settlement of southern New Mexico. Located just inside the Las Cruces Gate in Building 200, the museum complex includes a building housing a restored V-2 and displays relating to early work with the system at WSMR. The outdoor missile park beside the museum contains examples of the rockets and missiles tested on the range, from the Loon to the Pershing II and Patriot. The park is open from dawn to dusk daily. For more information, see www.wsmr-history.org.

Hours: 8 a.m. to 4 p.m. Tuesday through Friday; 10 a.m. to 3 p.m. Saturday, closed Sunday, Monday and holidays.

OUTDOOR RECREATION

575-678-1713

www.wsmrmwr.com

The Outdoor Recreation facility is in Building 1338 on Ripley Street. The facility offers a large variety of camping equipment from tents to campers and just about anything else you might need for that memorable camping trip.



White Sands Missile Range Museum Director Darren Court speaks to students about the V2 rocket display located at the museum.



A boy poses with the Easter Bunny during the annual Easter egg hunt.

There is also a variety of open and enclosed utility trailers available to make your move a little easier.

Planning a party and need a place to have it? How about the ACOE Lodge and Pavilion at Volunteer Park? Outdoor Recreation is Responsible for the lodge and can book your party or event. You can even rent a dunk tank or jumping balloon for a small fee.

Outdoor Recreation has a well-stocked retail area where you can purchase all of your fire-arm cleaning supplies, camping accessories, knives and other items. Outdoor Recreation also sells firearms and does FFL transfers.

Outdoor Recreation is responsible for the skeet and trap ranges. This facility is available on a reservation basis for four or more shooters. The small arms range is available through Outdoor Recreation on Saturdays only.

Need a place to ride your dirt bike or ATV, then stop by Outdoor Recreation and get the scoop on where to go. For those of you who have family coming to the area, how about having them stay at the Travel Camp Area at Volunteer Park? There are eight full hook-up sites available as well as four electric-only

sites. Call Outdoor Recreation for reservations or more information.

Need storage for your vehicle or personal property? Outdoor Recreation is the place to call. Outdoor Recreation also offers special programs that include mountain and road bike rides, hikes and road trips to various areas in New Mexico and the surrounding areas. Outdoor Recreation can also help active duty, military retirees and DoD civilians list their vehicles for the POV Resale Lot on post.

Hours: 9 a.m. to 5 p.m. Monday through Friday and 8 a.m. to 4 p.m. Saturday, closed Sunday and holidays.

POST EXCHANGE

575-674-2072

For one-stop shopping convenience, the Post Exchange includes the main store, shop-pette, Class Six, Family Hair Care Center, Optical Shop and Subway, all in Building 260 on Hof Street. Services include layaway, special orders, check-cashing, customer convenience orders, Western Union and more. The main store stocks a variety of items for the home as well as automotive merchandise. The shop-pette stocks a full line of convenience foods

like dairy products, canned foods, snacks and beverages with a Class Six stock of beer, wine and distilled spirits.

Hours: 6 a.m. to 8 p.m. Monday through Friday and holidays, and 8 a.m. to 8 p.m. Saturday and Sunday.

GAS STATION

The gas station is Building 270, across the street from the main exchange. The gas station is open 24/7 for credit and debit card purchases.

POST OFFICE

575-541-7429

Located in Building 153 on Joliet Street, the lobby is open 24/7. Box rental is available. Mail is delivered to quarters once a day Monday through Saturday, excluding federal holidays.

Hours: 11 a.m. to 1 p.m. and 2 to 4 p.m. Monday (and any day after a federal holiday); 10 a.m. to 1 p.m. and 2 to 4 p.m. Tuesday through Friday; closed Saturday, Sunday and holidays.

POST THEATER

The Post Theater, located on Rock Island Avenue, offers free movies at 7 p.m. on Fridays, 6 p.m. on Saturdays and 4 p.m. on Sundays, with children's movies featured on Sundays. Monthly movie schedules are posted on WSMR Facebook and the Missile Ranger post news-paper at www.wsmr.army.mil/ranger.

PRIVATE ORGANIZATIONS

575-678-6103/6105

Several private organizations are active on range. There are groups and clubs for all ages and interests, ranging from Girl Scouts to the White Sands Missile Range Historical Foundation. For more information, including points of contact, call 575-678-6103.

PROFESSIONAL DEVELOPMENT CENTER

575-678-5808

The White Sands Professional Development Center, Building 465, is home to the Directorate of Human Resources. Multi-function classrooms and auditorium (with video tele-conference capability) are available to White Sands organizations for use by reservation 7 a.m. to 4 p.m. Monday through Friday. Call 575-678-5408/5347 for additional information. The Installation Voting Assistance Office is in Room 149.

PUBLIC AFFAIRS

575-678-1134

Located in Building 1782, the Public Affairs Office works to provide accurate and timely information about the missile range, its

services and activities to the workforce, community and general public. Organizations and individuals may submit items for publication on our Facebook page or our post newspaper, the Missile Ranger, which is available online at www.wsmr.army.mil/Ranger. Current events and information can also be found at www.facebook.com/WSMissileRange, www.twitter.com/WSMissileRange and www.pinterest.com/WSMR, www.linkedin.com/company/wsmisilerange and Instagram at WSMisileRange. View the digital version of the Missile Ranger post newspaper at www.wsmr.army.mil/ranger.

PUBLIC SCHOOLS

White Sands Elementary and

Middle School: 575-674-1241

Oñate High School: 575-527-9430

White Sands elementary and middle schools are part of the Las Cruces public school system. The middle school features an Aerospace Academy in which students study the history and principles of flight. This program includes many hands-on activities and various field trips, allowing students to associate learned concepts to the many career opportunities in the aerospace field.

The first semester begins in August and ends before Christmas. The second semester starts in January and runs through May. The school is within walking distance of the housing area. White Sands high school students are bused to Oñate High School in Las Cruces, about a 25-minute ride. Visit the Las Cruces public school system website at www.lcps.k12.nm.us.

SHIPPING

For all Government/military shipments contact the Freight Movement Branch at 575-678-2622/1887.

SPORTS AND FITNESS

575-678-3374

Bell Gymnasium is in Building 236, 236A and 236B. The fitness center offers free membership for all active-duty Soldiers, DOD retirees, civilian employees, contract employees and their family members. The gymnasium is equipped with men's and women's locker rooms, men's and women's saunas, plus cardio equipment and free weights. There is 24/7 access to cardio, Nautilus and free weights. There are over 40 classes a week to choose from, as well as one-on-one personal training. Bell Gym has recreational leagues in softball, basketball, flag football, golf and more. There are a variety of racing events throughout the year, including 5Ks and triathlons. Children 12 and under are only authorized in the basketball and racquetball courts under parent supervision.

Hours: 5:30 a.m. to 8 p.m. Monday through Friday, 7:30 a.m. to 4p.m. Saturday, closed Sunday and all holidays.

Buildings 236A & 236B: 24/7 Access

Register your CAC card at the Bell Gymnasium front desk during main gym hours for 24/7 access.

STRAY ANIMAL IMPOUND FACILITY

575-678-7829/2225

White Sands Missile Range is working to improve the problem with stray and feral

animals on Main Post. The Directorate of Public Works (DPW) has developed a stray animal control program to care for stray animals that become loose to return them to their owners as quickly as possible.

Pets will be sheltered at the DPW Stray Animal Impound Facility for up to 48 hours in Building 1834A at East Navajo Avenue. If pets remain unclaimed after 48 hours they will be transported to the Animal Service Center of Mesilla Valley at 3551 Bataan Memorial West in Las Cruces for surrender.

In accordance with WSMR Regulation 215-1, all privately owned animals on WSMR must be vaccinated, microchipped and registered within 30 workdays after arrival to the installation or after a person assumes ownership of a new or adopted pet. Additionally, neutering of spaying pets is highly encouraged to reduce the urge of roaming and unwanted animals.

If you own a dog or cat, contact the Environmental Division at 575-678-2225 or the Stray Animal Impound Facility at 575-678-7829 to request a pet registration form. Return the completed form per instructions on the form within 30 workdays of establishing residence on WSMR.

This information will be maintained at the Stray Animal Impound Facility and will be used to return pets if they ever become lost and to ensure vaccinations are current. Keeping your pets vaccinations current reduced spread of diseases to wildlife, other pets and humans.

To report stray animals (domestic dogs and cats), call 575-678-1116.



White Sands Missile Range opened three state-of-the-art fuel facilities. The first one is located on main post, another at the Stallion Range Camp facility and a third at the Rhodes Canyon facility. The facilities are only for government vehicles. The gas station for personal vehicles is at Building 270 across the street from the main exchange. The POV gas station is open 24/7 for credit and debit card purchases.



PHOTO BY LAS CRUCES CONVENTION AND VISITORS BUREAU



NEIGHBORING COMMUNITIES

LAS CRUCES, NEW MEXICO

Just west of White Sands Missile Range and about a 35-mile drive through the Organ Mountain range is the city of Las Cruces. A majority of the installation's civilian workforce live in Las Cruces and thereby play a major role in its economic prosperity. In return, the city provides WSMR employees and visitors with a great quality of life, offering a broad spectrum of cultural, educational and recreational opportunities.

With a population of about 101,000, Las Cruces is one of the fastest-growing cities in New Mexico and the nation. It is also the second-largest city in New Mexico. The city has garnered numerous awards including rankings by Money magazine as one of the best college towns and by AARP as one of their "dream towns" in which to retire. Las Cruces has also been ranked by Forbes as one of the best small metro areas for business and careers.

The city has several recreation centers and numerous parks, including a skate park. The larger parks feature playgrounds, picnic tables and festivals throughout the year. Las Cruces has wonderful weather, so outdoor sports can be enjoyed year-round at some of southern New Mexico's finest recreational facilities. There are plenty of places to walk, run, hike, bike or play. The city's parks and recreation division manages more than 30 parks, as well as an aquatic facility, three public swimming pools and five recreation centers. Other recreational facilities include soccer fields, baseball fields and lighted tennis courts. The city of Las Cruces offers a variety of programs, activities and events for the public at several of the city's recreation centers. Outdoor enthusiasts also enjoy

hiking opportunities in the nearby Organ Mountains and searching for fossils near Picacho Peak.

Numerous museums and art galleries are within the city, including the New Mexico Farm & Ranch Heritage Museum, the Las Cruces Railroad Museum, the Las Cruces Museum of Art, Branigan Cultural Center and the University Art Gallery. A farmers and crafts market is held in historic downtown every Wednesday and Saturday.

Las Cruces features several annual events, all famous for their cultural flavor and down-home entertainment. Several of Las Cruces' annual events – SalsaFest, the Renaissance Arts Faire, Cowboy Days and the Fiesta de San Ysidro (now known as the Blessing of the Field) – have been voted to the list of the Top 100 Events in North America by the American Bus Association. Additionally, there are active theater groups as well as a symphony orchestra and other music ensembles.

Las Cruces is considered part of the "Borderplex" – along with El Paso, Texas, and Juarez, Mexico. The North American Free Trade Agreement, the city's proximity to El Paso and Juarez and its location at the interchange of two interstate highways have combined to influence and increase the area's industrial growth. The mainstays of the local economy include agriculture, commerce, education, and defense and aerospace industries.

While still a small part of the overall economic picture, the manufacturing sector is growing, employing about 5 percent of the overall labor force.

Las Cruces is home to New Mexico State University, with more than 28,000 undergraduate and graduate students on its main and branch

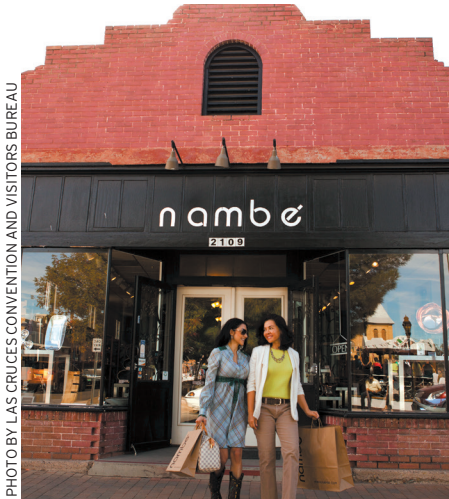


PHOTO BY LAS CRUCES CONVENTION AND VISITORS BUREAU

Shopping in Mesilla.

campuses. NMSU is a NASA Space Grant College and Hispanic-serving institution. On the main campus, bachelor's and graduate degree programs are available through the colleges of agriculture, consumer and environmental sciences, arts and sciences, business, education, engineering, extended learning, health and social services, honors and the graduate school. The College of Extended Learning also provides a wide array of distance education programs. NMSU is a member of the Western Athletic Conference.

The Las Cruces public school system is the second-largest school district in New Mexico. The district has 41 schools: 25 elementary schools (kindergarten through fifth grade), one combined elementary and middle school (kindergarten through eighth grade), eight middle schools (sixth through eighth grade) and seven high schools (ninth through 12th grade). Two of the high schools are early college high schools on the NMSU campus. The district also has a virtual learning academy for elementary through high school students. Student enrollment is about 24,600 students. The district offers well-rounded support services for its students including bus transportation, counselors, career exploration, drug and alcohol prevention programs, extracurricular activities and clubs, Head Start, libraries, magnet programs, technology, parenting classes for families, special education services and much more.

Quick links for more information on Las Cruces

- www.las-cruces.org
- www.lascruces.org
- www.lascrucescvb.org
- www.mveda.com
- www.nmsu.edu
- www.lcps.k12.nm.us

MESILLA

A few miles south of Las Cruces is historic Mesilla. The town was a destination of early Spanish explorers and, later, a rest stop on the Butterfield Overland Mail Route. The Gadsden Purchase made this territory part of the United States in 1854. In 1881, infamous outlaw Billy the Kid was tried for murder in Mesilla but escaped before the death sentence could be carried out.

Today, Mesilla is known for the restaurants, museums, gift shops and art galleries in and around its plaza. A crafts market is held on the plaza Friday and Sunday afternoons. A central landmark is the Basilica of San Albino, which was established in the early 1850s and was originally built from adobe. Mass is still offered in both English and Spanish.

Quick links for more information about Mesilla and its area attractions

- www.mesillanm.gov
- www.oldmesilla.org

ALAMOGORDO

Alamogordo, the county seat of Otero County, is a thriving community of more than 30,000. The city was founded in 1898 with the westward expansion of the railroad. It has been named in a national survey as one of the 50 healthiest places to live in the United States. Holloman Air Force Base, home of the 49th Wing and the German Air Force Flying Training Center, is the city's closest neighbor and largest employer.

Alamogordo supports a number of diverse industries to include logging and health-related enterprises. Tourism-related activity and light manufacturing also contribute to the economy. Alamogordo is the site of the Otero County Fair in August, the annual Cottonwood Festival on Labor Day weekend, the White Sands Balloon Invitational, the German Air Force Oktoberfest in September and the Christmas parade in December.

Other attractions include the New Mexico Museum of Space History and nearby Lincoln National Forest.

Quick links for more information about Alamogordo and its area attractions

- <http://ci.alamogordo.nm.us>
- www.alamogordo.com
- www.fs.usda.gov/lincoln

EL PASO

El Paso has long been recognized as the gateway city between the Southwest and Mexico. With a city and surrounding area population of more than 800,000, combined with neighboring Juarez, Mexico, with its population of more than 1.3 million, the area is one

of the largest bi-national metropolitan areas in the world. El Paso is also home to Fort Bliss and the William Beaumont Army Medical Center.

Within a day's driving time, one may go from ski slopes in snowy mountains to the ruggedness of Big Bend National Park and from Indian ruins in Mexico to lava beds formed by ancient volcanoes. The city is also home to the El Paso Chihuahuas minor league baseball team.

El Paso Community College has an enrollment of more than 30,000 students at its five campuses throughout El Paso County. It offers more than 130 programs of study to earn an associate degree or certificate of completion. Students can take courses that transfer to any Texas college or university.

The University of Texas at El Paso (UTEP) is a dynamic urban university that serves its more than 23,000 students enrolled in 70 bachelor's, 76 master's and 20 doctoral programs. UTEP is recognized nationally for its leadership role in changing the face of U.S. higher education. Its students, who are 78 percent Hispanic, mirror the population of this region and, increasingly, that of Texas and the United States. UTEP's success in serving as a catalyst for economic development and quality of life in this region has placed it in the national spotlight as a model 21st century research university. In 2014, Washington Monthly magazine ranked UTEP No. 8 in the U.S. among all national research universities.

Quick links for more information about El Paso

- www.elpasotexas.gov
- www.ci.el-paso.tx.us
- www.epcc.edu
- www.utep.edu

WHITE SANDS NATIONAL MONUMENT

With its glistening sand dunes, White Sands National Monument is a major attraction. The national monument is one of New Mexico's most visited national park sites and offers picnicking, nightly ranger-led sunset strolls, hiking, backcountry camping and the popular activity for kids of all ages – sledding down the dunes. For more information, visit www.nps.gov/whsa.



QUICK REFERENCE LISTINGS

Local Calling Area ... 678-XXXX, 679-XXXX, 674-XXXX or 99+674-XXXX	
Fort Bliss, TX	98 + 568-XXXX or 98 + 569-XXXX
William Beaumont Army Medical Center	98+568-XXXX
El Paso, TX	98+XXX-XXXX
Holloman Air Force Base, NM	99+572-XXXX
Alamogordo, NM	99+XXX-XXXX
Las Cruces, NM	99+XXX-XXXX
Socorro, NM	99+XXX-XXXX
DSN	94+XXX-XXXX

TOLL

Direct Dial	99 + 1 + Area Code + XXX-XXXX
Operator Assisted/Collect	99 + 0 + Area Code + XXX-XXXX

INFORMATION

DSN	678-2121
-----------	----------

Fort Bliss, TX	98 + 568-2121
Holloman AFB, NM	99 + 572-1110
New Mexico (All Cities)*	99 + 1 + 411
Outside New Mexico*	99 + 1 + Area Code + 555-1212
WSMR Area	678-2121

**Toll charges are applied for this service*

OPERATOR

Fort Bliss, TX	98 + 568-2121
Holloman AFB, NM	99 + 572-1110
WSMR Area	678-2121

EMERGENCY

Ambulance	911 or 575-678-1234
Fire	911 or 575-678-1234
Police	911 or 575-678-1234

ALPHABETICAL QUICK REFERENCE

ACOE Lodge	575-678-2407
Adjutant General	575-678-7645
ADPE Repairs	575-678-4220
American Red Cross	915-568-4898
Aquatic Center (Pool)	575-678-1068
Army Air	575-679-1301
Chief	575-679-1302
Maintenance	575-679-1304
Operations/Scheduling	575-679-1315
Army Community Service (ACS)	575-678-6767
Army Emergency Relief	575-678-1337
Army Family Team Building	575-678-2889
Army Substance Abuse Program ASAP	575-678-1957/2112
Arts and Crafts	575-678-5321
AT&T Operator	800-225-5288
Auto Skills Center	575-678-5800
Badge Office	575-674-1832
Beauty Shop/Family Hair Care	575-527-9883
Bell Gym	575-678-3374
Billeting	575-678-1838
Reservations	575-288-3226
BOSS	575-678-2844
Bowling Center	575-678-3465
Bowling Center/Snack Bar	575-678-1394

Business Development Office	866-532-9767
Cable TV (Comcast)	575-674-0440
Carlson Wagonlit Travel (CWT) SATO Travel	877-241-8454
Chaplain	575-678-2615
After Duty Hours	575-678-1234
Catholic	575-678-2615
Protestant Chaplain	575-678-5344
Secretary	575-678-2615
Chief of Community Recreation Division	575-678-1256
Chief/CID, Fort Bliss	915-568-1700
Child Development Center	575-678-2059
Family Child Care	575-678-0585
Civilian Counseling Service	575-678-1957
Employee Assist/Substance Abuse	575-678-2112
Civilian Personnel Advisory Center (CPAC)	
Appropriated Fund Civilian Employment	575-678-1130
Civilian Payroll Service	575-678-3366
Nonappropriated Fund Employment	575-678-2930
Commissary	575-678-2313
Fort Bliss	915-568-7889
Common Access Cards (CAC)	575-678-5739/5811
Community Action	575-678-4497
Community Center	575-678-4134
Community Recreation Division	575-678-1256
Computer Help Desk	575-678-4220/3680
Contracting Office	575-678-2850/5305/5767
Corps of Engineers	575-678-1238
Country Store/Office Supply	575-523-9880
CRD Admin	575-678-2887
Credit Union WSFCU	575-674-1217
CYS Services	575-678-2441
Defense Travel System	575-678-6831
Dental Appointments/Patient Information	575-674-3597
Deputy for Air Force	575-678-1251
Directorate of Human Resources	575-678-4196/5808
Directorate of Public Works	575-678-7810/8966
Service Orders (nonhousing/barracks)	575-678-1116
DOD Area Frequency Coordinator	575-678-5417
Driver's License (New Mexico Only)	575-678-8800
Duty Officer Navy	575-674-4008
After Hours	575-993-6509
Education Counselor (Mondays at WSMR)	575-678-4716
Education Center at Ft. Bliss	915-568-6792
EEO	575-678-2831
EEO Officer	575-678-5803
Employee Assistance Program	575-678-2112/1957
Environmental Division Nuisance Wildlife Issues	575-678-2225
Exchange CPO	575-674-2072
Exchange, Holloman Air Force Base	575-479-1509
Exchange Local	575-674-2072
Federal Express	800-463-3339
Federal Investigative Services	575-678-3159
Federally Employed Women,	
Three Crosses Chapter	575-678-5259/312-2649
Fire and Emergency Services	575-678-5105
Assistant Chief	575-678-4187
Deputy Chief	575-678-2600
Fire Chief	575-678-0314

QUICK REFERENCE LISTINGS

Fire Stations

Station #1 - Main Post.....	575-678-0470
Station #2 - LC-38.....	575-678-9128
Station #3 - Stallion Range Center	575-679-4434
Station #4 - HELSTF	575-679-5167
Inspections & Prevention Section	575-678-3585
Training Section	575-678-3073

Frontier Club 575-678-2055/2057

G-Staff

G-1 - Personnel.....	575-678-4345
G-2 - Intelligence.....	575-678-8790
G-3 - Operations.....	575-678-5175
G-4 - Logistics.....	575-678-6060
G-5 - Future Plans	575-678-1558
G-6 - Signal/Commo.....	575-678-2125
G-7 - Training.....	575-678-4345
G-8 - Resource Management	575-678-4345
G-9 - Civil Affairs	575-678-2317

Government Driver's License 575-678-3420/7933

Haz-Mat 575-678-5619/5280

Hazmin Center Service Counters 575-678-7956

Help Desk Team ASD 575-678-3680/4220

Household Goods (HHG)/Claims..... 575-678-3506/5005

Housing Services Office WSMR..... 575-678-2951

Housing Trouble Calls

Family Housing Trouble Calls, 24-hours..... 575-674-1668

Information Outside Post..... 505-555-1212

Inspector General..... 575-678-3902

Installation Voting Assistance Officer..... 575-678-8554

Installation Transportation Office (ITO)/(TMO)..... 575-678-6788

Government Driver's License 575-678-3420/7933

Household Goods (HHG)/Claims..... 575-678-3506/5005

NTV Fleet Manager..... 575-678-1269/3420

Packing and Crating 575-678-4911 |

Shipping Gov't/Military Freight..... 575-678-2622/1887

ITR, UPS, Community Center 575-678-4134

Judge Advocate General (JAG)..... 575-678-1263

Landfill 575-678-5034

Leisure Travel Services..... 575-678-4134

Library 575-678-5820

Mail Distribution Center (Official Mail Only)..... 575-678-3384

Medical Services..... 575-674-3500

Appointments/Patient Information 575-674-3500 |

Industrial Hygiene..... 575-674-3518

Treatment Room..... 575-674-3500

Occupational Health..... 575-674-3523

Optometry Clinic..... 575-674-3500

Pharmacy..... 575-674-3564/3565

Pharmacy Refills (please call in all refills)..... 575-678-7009

Physical Exams/Active Duty..... 575-674-3500

Preventive Medicine..... 575-674-3520

Records..... 575-674-3500

Social Work Section..... 575-674-3500

TRICARE Service Center..... 877-988-9378

Middle School and Teen Programs..... 575-678-7859

Military Intelligence, 902nd MIGP..... 575-678-0385

Military Personnel Division 575-678-7645

Common Access Cards/Identification Cards..... 575-678-5739

Museum 575-678-3358

MWR Special Events and BOSS 575-678-4651

NAF Personnel..... 575-678-2930

New Mexico Park & Ride..... 866-551-RIDE (7433)

Newspaper/Missile Ranger 575-678-2716

Notary Public 575-678-1263

NTV Fleet Manager..... 575-678-1269/3420

Operator (Information) 575-678-2121

Optical Shop 575-674-1280

Outdoor Recreation Equipment 575-678-1713

Parent Central Services, Building 501..... 575-678-2441

Poison Control Center 800-222-1222

Police, Law Enforcement & Security 575-678-1234

Law Enforcement Desk..... 575-678-1234

Physical Security..... 575-678-7905/5414/8602

WSMR Police Records and Administration..... 575-678-7675/3317

Fort Bliss, TX 915-568-2115 |

Post Locator..... 575-678-3004

Information..... 575-678-0114

Telephone Customer Service..... 575-678-1111

To Change Locator Information..... 575-678-3004

Post Office 575-541-7429

Professional Development Center 575-678-4646

Property Book Officer 575-678-7535

Protocol Office 575-678-1038

Public Affairs..... 575-678-1134

Public School..... 575-674-1241

Cafeteria..... 575-674-1317

Range & Road Information 575-678-1178

Reception Center 575-678-5605/1302/1099

Records Holding Area..... 575-678-8513

Roads and Grounds 575-678-5034

Safety..... 575-678-2305/3221

School AgeCare..... 575-678-4140

School Days: 5:30 a.m. to 6 p.m.

Sexual Assault Response Coordinator (SARC)

SHARP Hotline 24/7 Response Line..... 575-993-0589

Shipping Gov't/Military Freight..... 575-678-2622/1887

Shoppette (PX)..... 575-674-2072

Skeet and Trap..... 575-678-5756

Small Arms Range Complex (SARC)..... 575-678-2212

Stallion Range Center..... 575-679-4258

Stray Animal Impound Facility..... 575-678-7829

To report strays call..... 575-678-1116

Subway..... 575-674-2829

Telephone (official business) 575-678-2121

Billing Problems..... 575-678-1111

Information..... 575-678-2121

New/Change Service..... 575-678-1111

Repair 575-678-1111 |

Telephone Bill Payments..... 575-678-5050

Transportation Motor Pool (TMP)/Dispatcher..... 575-678-0029/7933

Voting Assistance Office..... 575-678-8554

Weather/Meteorology Branch 575-678-2488

White Sands Federal Credit Union - WSMR..... 575-674-1217

White Sands Homes (BBC) Management Office..... 575-674-2463

White Sands Homes (BBC) Work Order Desk 575-674-1668

White Sands National Monument 575-479-6124

WSMR Public Schools 575-674-1241

Fax..... 575-674-1515

